

ICHEC BRUSSELS MANAGEMENT SCHOOL



Brussels
Belgium

KEY FACTS

Subject Area Business & Languages or Business

Language ICHEC is a French-speaking business school. The majority of courses are taught in French. However it is possible to follow a complete programme in English - check our website for the list of courses in English.

Academic Calendar

Semester 1	Late September to Late January
Semester 2	Mid-February to Late June

Module Catalogue Have a look through [the module catalogue](#) for modules available to exchange students.

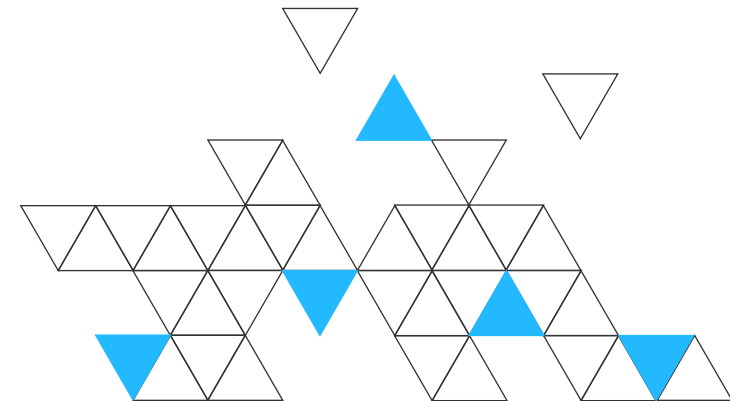
Financial Support As a UK Erasmus student, you are entitled to receive an [Erasmus Grant](#) for your time away at a participating Erasmus institution.





CONTENT

The City
The University
Accommodation & Living
Contacts
Student Experiences



BRUSSELS, BELGIUM

Brussels, capital of the kingdom of Belgium is also the capital of Europe. Headquarters of the European Union and the North Atlantic Treaty Organization (N.A.T.O.), Brussels is an international financial centre and home to the European headquarters of over two thousand multinationals. Brussels offers high-calibre scientific resources and has flexible economic infrastructures that have enabled it to keep pace with the great technological changes of the 21st century.

A destination that's easy to reach and reasonable prices that won't strain its visitors' pockets, regardless of age. This cosmopolitan city that loves good food lives life its way and expresses itself in a style very much its own: sometimes rebellious and mischievous, sometimes thoughtful and composed, but always very likeable. Despite its European dimension and despite all the different languages spoken on the corner of every street, Brussels is still inspired by a very "village-like" spirit. Of course, it's well known for its Grand-Place, its Atomium, its Manneken-Pis, its Gueuze and its Kriek, its waffles and its chocolates. Take the time, too, to soak up the very special atmosphere of its many different districts. Take a stroll to Rue Dansaert, Halles Saint-Géry and Place Sainte-Catherine. Head for Saint-Boniface, Châtelain or Flagey.

You'll discover a Brussels that's in the spirit of the times, a capital that's relaxed and comfortable, as much in its history as in its present-day reality. In other words, to put it in a nutshell, just relish Brussels, a fine and beautiful city to explore and discover.

MORE INFO

visit.brussels
brussels.info
belgium-tourism.be



Population 1.1 million
Currency Euro €
Time difference GMT+1

ICHEC BRUSSELS MANAGEMENT SCHOOL

Institut Catholique des Hautes Etudes Commerciales



ICHEC enables its students to develop their talents and educates them to become responsible as well as open-minded managers. In order to accomplish this mission, ICHEC adopts a rigorous approach to its academic programs, informed by research, with an emphasis on business practice.

The ICHEC spirit is founded on the values of respect, solidarity and integrity. A university level management school in the tradition of leading business schools. It offers day and evening management programmes, both as initial training and continuous education.

ICHEC, a group of 4 training centers specialized in research and continuous education for adults ICHEC Entreprises, ICHEC PME, ICHEC- ESSF (Ecole supérieure des sciences fiscales) are some of the components of the ICHEC group, dedicated to quality and excellence in business management training.

At the heart of a network more than 2,000 students, more than 10,000 alumni who are part of the ICHEC Alumni association, a faculty of 200 academically qualified or professionally qualified members who bring students their day-to-day experience of management.

 ichec.be

 Guide for International Students

 University Videos

Erasmus code B BRUXEL86

No of students 2,000+

Style of study ICHEC adopts a rigorous approach to its academic programs, informed by research, with an emphasis on business practice.

Grade system The Flemish grading system is based on grades ranging from 0 to 20, with 10/20 being the pass grade.

Grade	ECTS Grade	Descriptor
17 - 20	A	Excellent
15 - 16	B	Above average
13 - 14	C	Satisfactory
11 - 12	D	Pass
10	E	Sufficient
<10	F	Fail

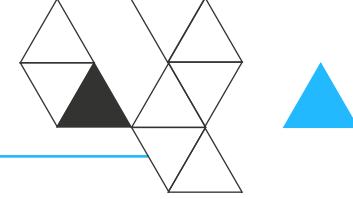


Application Times

Please note that you have to apply to the exchange programme in your current year by 20 December. Applications for the host university must be submitted between April and May or September and October (depending on the Trimester), in the year following your initial application.

Going abroad in Trimester 1	Initial Application Form	20 December (current year)
	Host University's Form	April – May (following year)
Going abroad in Trimester 2	Initial Application Form	20 December (current year)
	Host University's Form	September – October (following year)

ACCOMODATION & LIVING



ICHEC has no on-site student residence. Most students rent rooms (called "kots") to private landlords around the school - usually furnished rooms in student houses accommodating 6-10 people, or in shared flats (3-4 students). Each student has his/her own bedroom, but kitchen and bathroom may be shared.

The International Office offers assistance to foreign students in their search for accommodation.

Living Costs

For Brussels, you would need between €870 and €1,050 per month to cover all living expenses, including the accommodation.

Student halls of residence €300 - €380/month

Rent/share an apartment €400 - €620/month

Food €350/month

Public transport €30/month

Books €30/month

Entertainment €50/month

Cappuccino (regular) €2.75

More on Cost of Living in Brussels

 [Numbeo.com](https://www.numbeo.com)

Transport

The easiest and also cheapest ways to travel while living in a Belgian city are trains and buses. [STIB/MIVB](#) provides metro, tram and bus service within the Brussels city limits. A monthly pass for students on public transportation usually costs around €20 per month.




Cycling in big Belgian cities is not recommended due to the fact that there are a few cycle lanes.

If you want to travel around Belgium, the best way to do that are trains. The system, operated by [the Société Nationale des Chemins de Fer Belges/Belgische Spoorwegen](#), is one of the best in Europe and fares have low prices.

CONTACT FOR INCOMING STUDENTS





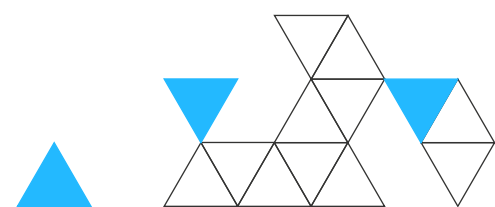
If you're interested in the programme or you have any queries, please contact the Edinburgh Napier University's Global Mobility team first:

-  studyabroad@napier.ac.uk
-  0131 455 4574 or 0131 455 3412
-  napier.ac.uk/exchanges

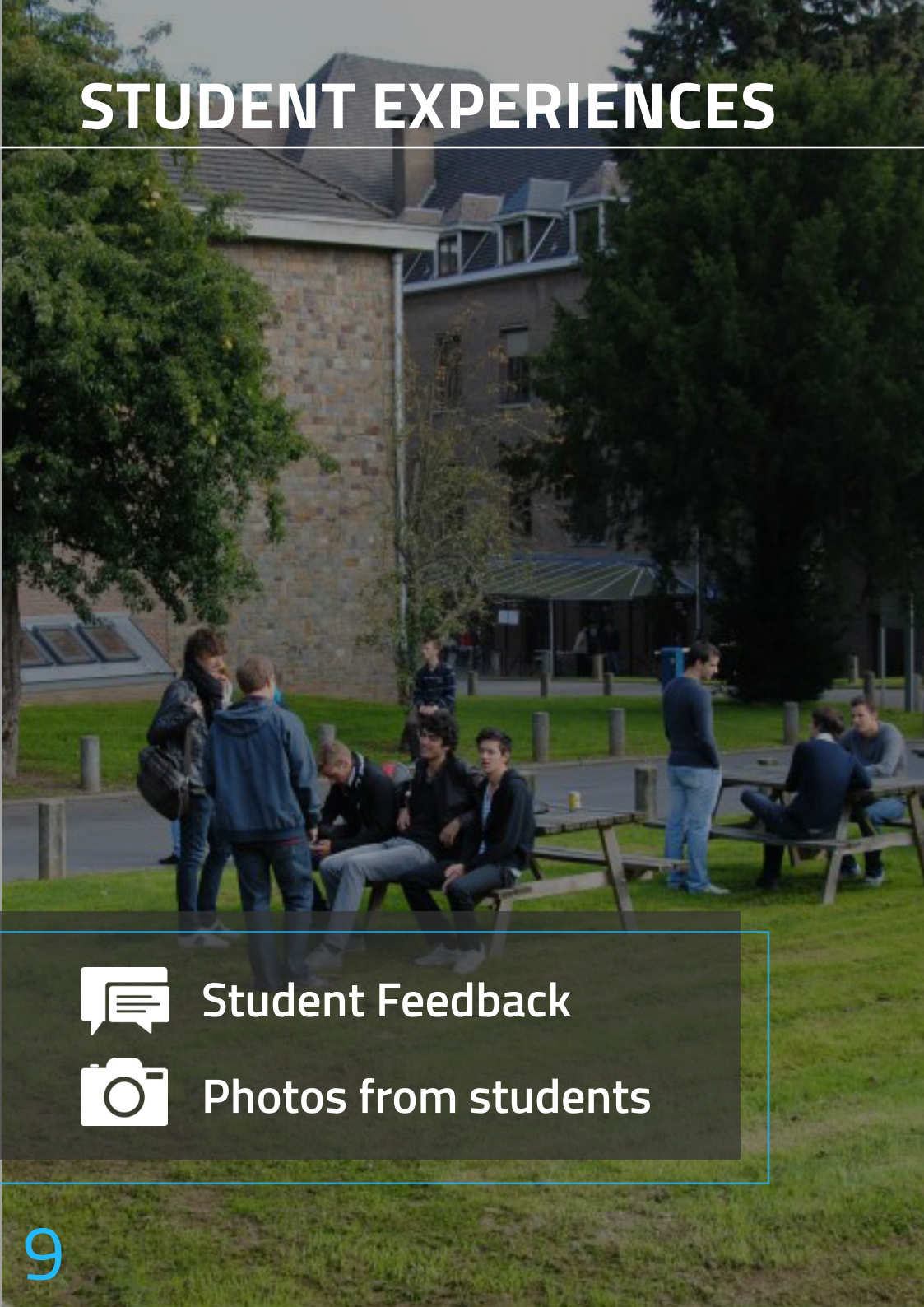
ICHEC BRUSSELS MANAGEMENT SCHOOL

The International Office

Rue au Bois, 365A
1150 Bruxelles
Belgique

-  exchange.in@ichec.be
 -  +32 2 778 03 75
- 

STUDENT EXPERIENCES



“Belgium is a
nice country
where you can
travel a lot”



Student Feedback



Photos from students



All images sourced from the university's official website and social media accounts, except where noted otherwise.

Notice something that we need to fix or update? Please email us studyabroad@napier.ac.uk