

# Study Opportunities at Lund University | Sweden

EDUCATION, RESEARCH AND COLLABORATION SINCE 1666



## LUND UNIVERSITY IN BRIEF

**FOUNDED:** 1666

### **MOTTO AND SEAL:**

*Ad utrumque (paratus)*  
prepared for both



**WORLD RANKING:** 70 (QS 2015/16)

**NUMBER OF STUDENTS:** 41 000 students  
(15% international students)

**NUMBER OF STAFF:** 7 500

### **FACULTIES**

- Economics and Management
- Engineering
- Fine and Performing Arts
- Humanities and Theology
- Law
- Medicine
- Science
- Social Sciences
- Also linked to the University are several centres and research institutes

**CAMPUSES:** Lund, Malmö and Helsingborg

**VISION:** A world-class university that works to understand, explain and improve our world and the human condition.

# Welcome to Lund University

---

## **A MEETING PLACE FOR STUDENTS FROM AROUND THE WORLD**

Lund University is one of the world's top 100 universities and the most popular choice for international students coming to Sweden, attracting students from over 130 countries.

We offer a global environment where students encounter different cultural perspectives and gain international contacts – something which is valued by employers worldwide.

With a thriving student life and a compact campus where everything is within cycling distance, the atmosphere in Lund is both international and intimate.

## **CENTURIES OF INNOVATION AND CREATIVITY**

Lund University is one of the oldest learning institutions in Scandinavia. Officially established in 1666, Lund University can arguably trace its roots to 1436 when it was recognised as a studium generale, an institution of international excellence.

## **AN INTERNATIONAL UNIVERSITY**

The University has a clear international profile, with partner universities in over 70 countries. We are also members of the research-intensive university networks, Universitas 21 (U21) and the League of European Research Universities – LERU.

## **BROAD RANGE OF EDUCATION**

As a study destination, Lund University offers one of Scandinavia's broadest ranges of programmes and courses taught in English, including exchange, study abroad, Bachelor's, Master's, PhD and professional studies.

## **CUTTING-EDGE RESEARCH**

Ultrasound, Bluetooth and dialysis are all examples of revolutionary discoveries that have their roots in research at Lund University. Funding of EUR 530 million a year goes to research at eight faculties, which gives us one of Sweden's strongest and broadest ranges of research activity. Over 30 of our research fields are world-leading.



## Lund University 350th Jubilee

On 19 December 1666, the regency of Charles XI of Sweden took the decision to found Lund University, and the University was officially inaugurated 28 January 1668. To celebrate these events, Lund University's 350th jubilee activities will go on from from December 2016 to January 2018.



# World leading research facilities

## MAX IV LABORATORY

MAX IV Laboratory is a national electron accelerator laboratory for synchrotron radiation research.

The MAX IV facility, the largest and most ambitious Swedish investment in research infrastructure, is the brightest source of x-rays worldwide and will receive more than 2 000 scientists annually, from Sweden and the rest of the world.

Research takes place in areas such as materials science, structural biology, chemistry and nanotechnology.

The Max IV Laboratory opened in June 2016.

## EUROPEAN SPALLATION SOURCE

The European Spallation Source (ESS) is a multi-disciplinary research centre based on the world's most powerful neutron source.

This new facility will be up to 100 times brighter than today's leading facilities, enabling new opportunities for researchers in the

fields of life sciences, energy, environmental technology, cultural heritage and fundamental physics.

ESS is one of the largest science and technology infrastructure projects being built today.

The facility design includes a 5 MW linear proton accelerator, a rotating tungsten target station, 22 state-of-the-art neutron instruments, a suite of laboratories, and a super-computing data management and software centre. Around 2 000-3 000 guest researchers will carry out experiments at ESS each year.

ESS is expected to deliver its first neutrons by the end of the decade, with the user programme to follow in 2023.

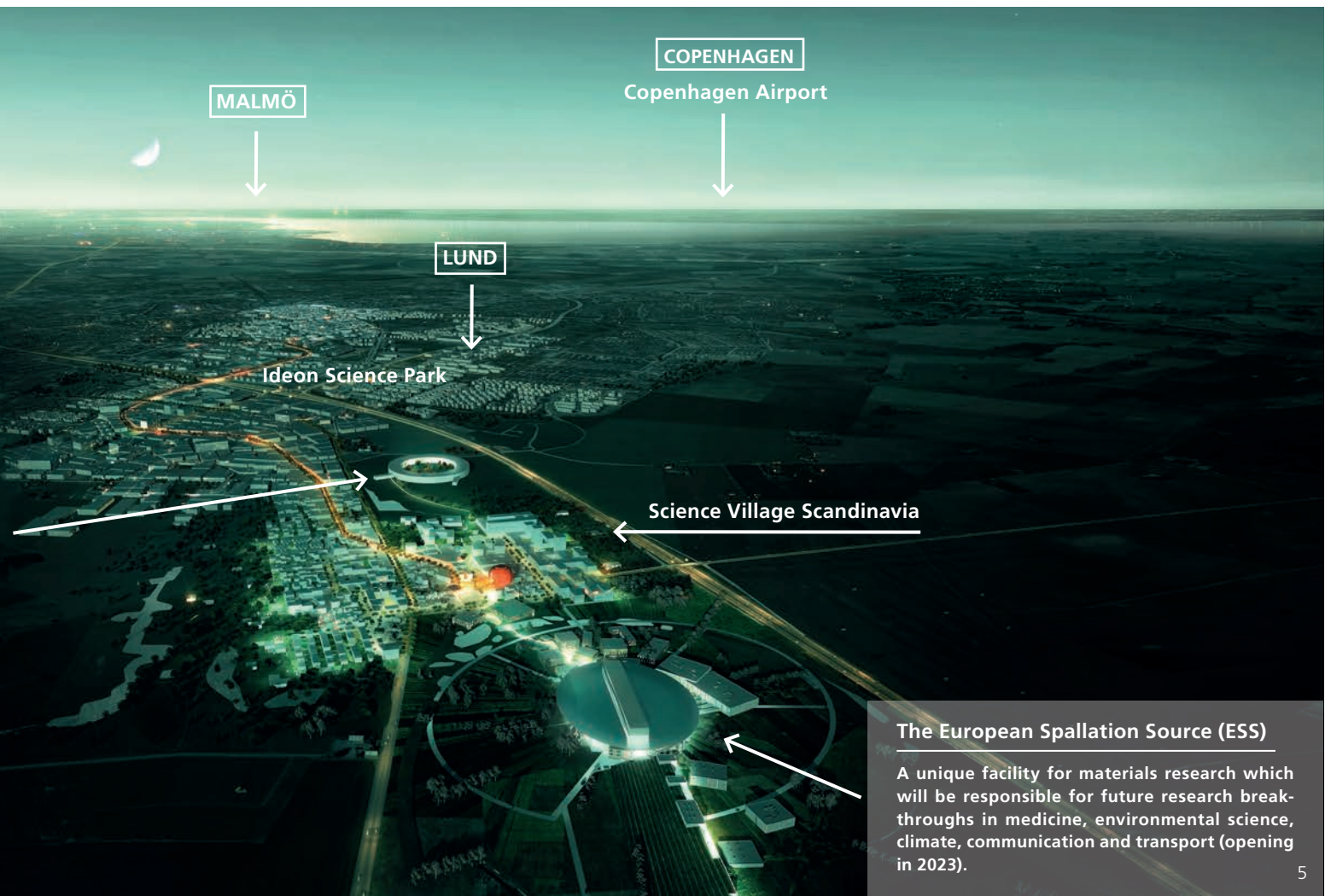
The two facilities will be of decisive importance for future scientific and industrial development in both materials science and life science.

picture by COBE

## MAX IV Laboratory

The world's foremost synchrotron radiation source which puts Sweden in a class of its own in materials and nano research (opened in June 2016).





### The European Spallation Source (ESS)

A unique facility for materials research which will be responsible for future research breakthroughs in medicine, environmental science, climate, communication and transport (opening in 2023).

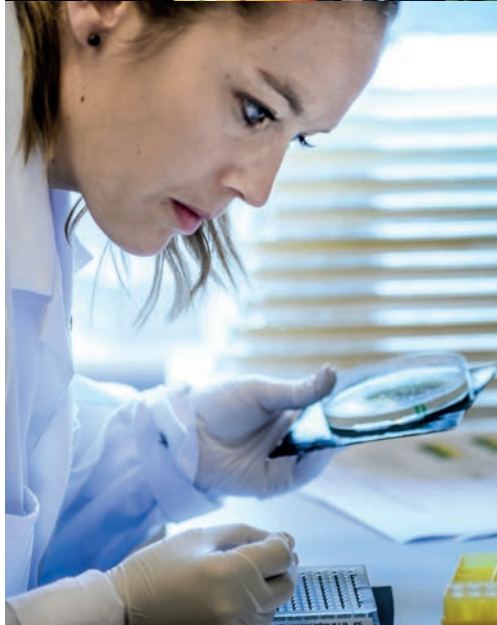
## STRONG RESEARCH AREAS

- Materials science, surface physics and nanotechnology
- Advanced laser physics and spectroscopy
- Diabetes
- Cancer
- Automatic control and complex systems
- Information technology and mobile communications
- Neuroscience and neurodegenerative diseases
- Cognitive science
- Stem cell therapy
- Evolution, ecology and animal migration patterns
- Environment, climate, sustainable systems and biodiversity
- Epidemiology
- Innovation and entrepreneurship
- Middle Eastern studies

## IDEON SCIENCE PARK

Ideon Science Park, Sweden's first and largest science park, has close links to Lund University. It is one of the most important and successful of its kind in Europe. Today there are around 350 companies based at Ideon, and of more than 900 companies that have operated from the park since it started in 1983, the majority have their roots in research at Lund University.





## EXAMPLES OF INNOVATIONS FROM LUND

- 1926 Barospirotor – the first respirator
- 1944 The Tetra Pak tetrahedron
- 1946 The artificial kidney
- 1953 Medical ultrasound
- 1966 Bricanyl – asthma medicine
- 1967 Nicorette – help smokers quit
- 1972 The ink jet printer
- 1991 Proviva – probiotic fruit drink
- 1991 CLS – laser cancer treatment
- 1993 Qlik – data visualisation software
- 1994 Bluetooth
- 1997 Precise Biometrics fingerprint reader
- 2001 LUCAS – mechanical cardiac massage
- 2004 Polar Rose – advanced face and image recognition technology
- 2005 Hövding – invisible bicycle helmet
- 2007 Spinach pill that suppresses hunger
- 2008 Cancer diagnostics using MR imaging
- 2008 Sol Voltaics – nanowires for solar cells
- 2009 Treatment of pre-eclampsia
- 2012 Orbital Systems – the world's most water-efficient shower
- 2013 Endodrill – instrument for improved cancer diagnostics
- 2013 Mapillary – user-generated street view service
- 2014 Reccan Diagnostics – cancer diagnostics using proteins



## EXPERIENCE FOUR DISTINCT SEASONS

Summers are warm and pleasant, 20 to 25°C (68 to 77°F) with up to 17 hours of daylight.

Winters are cold but Lund has a much milder winter climate compared to the rest of Sweden, -5 to 3°C (23 to 37°F) and down to 7 hours of daylight.

Spring is fresh and vibrant, 3 to 16°C (37 to 61°F).

Autumn is crisp and beautiful, 6 to 16°C (43 to 61°F).



# Sweden

---

Home of the Nobel Prize, the world's most prestigious academic distinction, Sweden is a safe, modern and eco-conscious country with a great global reputation, stunning nature and one of the world's highest living standards.

Sweden is the fifth largest country in Europe (450,000 square kilometres), but has a population of only 9.9 million.

Sweden is ranked as one of the best countries in the world at providing higher education (Universitas 21, 2015) and English is spoken by 90% of the population, allowing students to have a unique European experience without the language barrier.

As one of the world's most creative countries, Sweden has a proud tradition of innovation and entrepreneurship. Innovative research at universities and companies has resulted in many successful inventions, including the computer mouse, Bluetooth technology, the pacemaker, the ball bearing, the Tetra Pak beverage packaging system, the dialysis machine and internet applications such as the online music streaming service

Spotify and the free internet calling service Skype. There are more large internationally leading companies per capita in Sweden than in any other country. Sweden is ranked among the top three most innovative nations in the world (Global Innovation Index 2015). The Malmö region, including Lund, has also been named as the 4th most inventive in the world (Forbes: World's Most Inventive Cities 2013).

The Swedes have developed a form of society that fosters equality, cooperation and democracy in every aspect of life. Sweden has been praised internationally for its approach and ability to maintain a relatively healthy economy during times of global economic crisis. The Swedish welfare model also has a positive reputation as a responsible system that looks out for the long-term interest of all of its citizens.

Studying in Sweden not only means experiencing a new way of learning and thinking, but also the chance to enjoy Swedish culture and traditions, beautiful nature and a different way of life.



## SWEDISH TRADEMARKS

IKEA  
Spotify  
Skype  
Ericsson  
Volvo  
Tetra Pak  
ABB  
H&M  
Atlas Copco  
Astra Zeneca  
SKF  
Absolut Vodka  
Saab

## POPULAR CULTURAL BRANDS

Zlatan Ibrahimovic  
Minecraft and Candy Crush Saga  
Max Martin  
Avicii  
Robyn  
ABBA  
Stieg Larsson's Millennium  
Astrid Lindgren's Pippi Longstocking  
Alexander Skarsgård  
Alicia Vikander  
Ingmar Bergman



## Campus Locations

### LUND

Lund University's main campus is located in Lund – a small, safe city steeped in history, yet with the healthiest and youngest population in the country (population 110 000). There are 130 nationalities in Lund, making it a truly international city in which to study.

As one of the oldest cities in Sweden, dating back to 990, Lund is a city of contrasts where 1 000 years of history blend with modern knowledge and ideas. The combination of business, students and researchers from around the world has given birth to Lund's unique character as a city of strong research-based global industries.

The city itself is compact and charming, with picturesque old houses, cobbled streets and beautiful green surroundings. Student cafés, nightlife, a vibrant and intellectually stimulating atmosphere, rich culture and a wide assortment of leisure activities all help to make your stay a memorable experience.

The University lies in the heart of the city. In Lund everything is nearby – within reach on foot or by bicycle. There are frequent trains to nearby

Malmö, Helsingborg, Copenhagen and Copenhagen Airport (the closest international airport, 35 minutes away).

### HELINGSBORG

Helsingborg is a scenic coastal city located 30 minutes by train from Lund. Around 4 000 students study at Campus Helsingborg in subjects including service management, strategic public relations, media studies, energy-efficient building design, social work and some undergraduate engineering courses. Most students studying at Campus Helsingborg also live in the city, which has popular beaches and a lively atmosphere.

### MALMÖ

Malmö is the third largest city in Sweden and is only 10 minutes by train from Lund. Many Lund University students live in Malmö and commute to Lund, while students living in Lund often visit Malmö to enjoy the advantages of a big city. The city is home to Lund University's Faculty of Fine and Performing Arts. Public Health and other medical studies are also taught in Malmö.



## HOUSING

Student corridor rooms are single bedrooms furnished with a bed and desk, either with a private en suite toilet, shower and wash basin or shared bathroom facilities. Corridor rooms have a shared kitchen and living area and a shared laundry room.

Studio flats are self-contained rooms with a combined bedroom, living area, small kitchenette and bathroom with a shower, toilet and wash basin. No areas are shared except the laundry room. One-bedroom apartments, shared apartments or lodging with a family are other student housing options.

LU Accommodation is a service at Lund University which manages some of the student housing available in Lund, Helsingborg and Malmö. The Academic Society, student nations and local private landlords provide additional student housing options.



## LUND – THE CITY OF BIKES

The easiest way to get around Lund is by bike. The city is small and compact which means your class is typically no more than 5-15 minutes from your accommodation.

Cycle paths make biking safe and convenient. It's easy to find a second-hand bike once you arrive in Lund and join in the cycling culture.

## RESIDENCE PERMIT

Citizens of countries outside of the EU/EEA require a residence permit from the Swedish Migration Agency to study in Sweden. You must prove that you have funds to support yourself while living in Sweden (SEK 7 974 per month of study).

## LIVING COSTS

A typical student budget to cover housing, food, clothing, books and leisure time is SEK 7 974 per month of study (US\$ 970/ € 855). A suggested budget for one academic year (10 months) is SEK 79 740 (US\$ 9 700/ € 8 550).

## INSURANCE

All international students are covered by a comprehensive insurance policy provided by the Swedish government, which includes accident cover, costs for transport home in case of illness or accident, liability cover and legal expenses while studying in Sweden.

## SWEDISH PERSONAL NUMBER

Students studying for more than 12 months can apply for a Swedish personal identity number from the Swedish Tax Agency, on arrival in Sweden. This number simplifies many practical transactions and gives access to the same health benefits that Swedish citizens receive.



Lund University has a network of more than 26 libraries in Lund, Malmö and Helsingborg with an electronic library collection including more than 15 000 e-journals, 500 databases and many e-books.



# Academic Life & Student Services

## ACADEMIC YEAR

The academic year is divided into two semesters, each lasting 20 weeks. A course load of 30 credits per semester equals full-time studies.

### Autumn semester:

Late August to mid-January

### Spring semester:

Mid-January to early June

At Lund University students experience an open, informal study environment, with teachers and students usually on a first-name basis.

Teaching is often done in small groups, which encourages dialogue and collaboration, and teachers are accessible outside lecture hours. Students are also tasked with group work, which presents new challenges and opportunities for students and simulates the real dynamics of an international work environment.

Courses (modules) are usually taught one at a time (engineering two courses at a time) rather than

multiple parallel courses. This allows students to go more in-depth into the course content.

Critical thinking and freedom of mind are the cornerstones of academic life at Lund University. Critical thinking refers to the ability to assess information and form independent and well-informed opinions; to give and receive criticism in a constructive manner; and to engage in discussion with fellow students and learn from others. Freedom of mind refers to the ability to think outside the box – to liberate oneself from conventional wisdoms, to value the authenticity of ideas and experiences, and to appreciate and seek fresh perspectives on old ideas.

These approaches are stimulated in all activities at the University. In seminars, workshops and experiments, students analyse and present solutions to given problems and assignments. Theoretical concepts are tested in practical situations, and practical experiences are employed to develop and enrich theory.

A large part of the learning process takes place outside the classroom through independent study and discussion of the course material in groups.

## STUDENT SERVICES

- International offices at the faculties and the University's central International Desk help international students with academic and practical matters.
- LU Accommodation helps international students with housing.
- The Academic Support Centre offers consultations around academic writing, presentation skills and study skills.
- The Swedish Language Lounge is a weekly social evening where students can practise Swedish. Weekly social activity nights and other events are also offered.
- Student Health Services help students with problems that affect their ability to study.
- Disability Support Services offer learning support services and contact with specialist teachers and mentors.
- The Careers Service helps to prepare students for their transition into working life by giving CV guidance, seminars on the Swedish labour market and information on what recruiters are looking for.
- Student portal and email account services.



### TOP REASONS TO STUDY AT LUND UNIVERSITY

- Sweden's top-ranked university, ranked 70th in the world (QS World University Rankings 2015/16).
- The number one choice for international students studying in Sweden.
- Lund is considered the best student city in Sweden with the unique combination of traditional student nations (social clubs), an academic society and student unions organising events and activities year round.
- An international environment where 90% of Swedes speak English.
- Sweden is one of the safest countries in the world and ranked as one of the best in which to live.

## Student Life at Lund University

Considered the best student city in Sweden, Lund University is known for its variety of student organisations, including the "nations" of Lund, the Academic Society and student unions. Together these student organisations have created many long-standing student traditions. Their combined activities, available through the "Studentlund" membership, form the heart and soul of student life in Lund today.

### THE NATIONS

The 13 nations are large, welcoming student societies that are unique in Sweden. Getting involved in a student nation is one of the best ways to meet friends and enjoy student life at Lund. The nations organise a lot of social activities including running bars, clubs (e.g. photography, baking, music), social sports as well as parties, concerts, cheap dinner nights and social events.

### THE ACADEMIC SOCIETY

The Academic Society ("Akademiska Föreningen" or "AF") organises events including "Studentafton" (evening interviews with high profile guests), student radio, student TV, student thea-

tre, "Spex" comedy musicals, lectures, art and cultural events and AF Bostäder accommodation.

### STUDENT UNIONS

The student unions handle politics and student rights and organise events such as formal balls, careers fairs and more.

### SPORTS

There are plenty of opportunities to participate in all kinds of social or competitive sports through the student nations or by joining local sports clubs. Lund University is also a great base from which to experience the beautiful nature and outdoors of Sweden.

### CULTURE

Lund, Malmö and Helsingborg offer a variety of museums, galleries, public events and performances. Lund University even has its own museum of art – Skissernas Museum – the Museum of the Artistic Process and Public Art, founded in 1934.

## ARRIVAL DAY

International students are greeted at Copenhagen airport before taking the 40-minute train ride over to Lund. Students are driven from the railway station to the main student building to register their arrival, buy tickets for events, take care of practical matters, collect housing keys and be driven to their accommodation (if provided through LU Accommodation).

- Autumn semester Arrival Day: mid-August
- Spring semester Arrival Day: mid-January

## ORIENTATION & INTRODUCTION

A two-week programme of practical information sessions and fun social activities is offered to all international students to welcome and introduce them to the University and create opportunities to make new friends before classes start. Events include visits to attractions in the region, a welcome party, a formal dinner, "Taste of Sweden", shopping at IKEA, a treasure hunt, a sports day and more.

## INTERNATIONAL MENTORS

Groups of 15-20 students are assigned international mentors who help welcome new students, show them around their new city, organise informal social activities and help with practical questions throughout the semester.



## UNIQUE STUDENT TRADITIONS

- "Lundakarnevalen", the student-carnival – a tradition since 1849.
- "Spex" student theatre – one of the most eccentric traditions, since 1886.
- "Studentafton" is a tradition from 1905 organised by the Academic Society, where invited guests are interviewed in an intimate, informal setting.
- The Lund University Male Voice Choir's annual May Day appearance is a tradition from 1831.
- "Sista April" or "Valborgsmässo-afton" is celebrated on 30 April with students gathering in the city park to socialise.
- "Sittning" a formal sit-down party with singing and socialising.

# Exchange Studies at Lund University

## JOIN US FOR AN EXCHANGE

Lund University is one of the most popular student exchange destinations in Europe and receives more than 2100 exchange students per year from across the globe.

Lund University has exchange agreements with 600 universities in over 70 countries worldwide, including more than 400 within the EU's Erasmus+ programme. Students can come to Lund University for exchange at both Bachelor's and Master's levels. Exchange students do not pay tuition fees to Lund University.

## WHAT ARE EXCHANGE STUDIES?

Exchange studies implies that your home university has a formal exchange agreement with Lund University. The agreement can be specific to a faculty, a department or a university-wide agreement.

You must be nominated by your home university and then apply for exchange studies for either one semester or two semesters of study.

## APPLYING FOR EXCHANGE STUDIES

The first step is to apply through your *home* university to be nominated for an exchange. You apply through your central International Office or an international coordinator at your faculty.

## ENGLISH LANGUAGE REQUIREMENTS

It is recommended that your level of English language proficiency is equivalent to IELTS 6.5 or TOEFL 90.

## DEADLINES FOR NOMINATED STUDENTS

Students nominated for exchange to Lund University select courses during the following application periods:

**1 April–25 April**  
for autumn semester studies

**1 October–25 October**  
for spring semester studies

[www.lunduniversity.lu.se/exchange](http://www.lunduniversity.lu.se/exchange)

## WIDE SELECTION OF COURSES

Lund University offers more than 700 courses, across a wide range of subjects, that are taught in English and suitable for exchange students.

Admission to courses depends on the following:

- The type of agreement between your home university and Lund University (e.g. a university-wide agreement, a specific faculty agreement or department-level exchange agreement)
- Whether you meet the specific admission requirements of the courses
- Places available on the courses

Find all courses suitable for exchange students:  
[www.lunduniversity.lu.se/exchange-courses](http://www.lunduniversity.lu.se/exchange-courses)



## ECONOMICS AND MANAGEMENT

- **business administration:** *accounting, corporate finance, organisation, strategic management, entrepreneurship, marketing*
- **economics:** *econometrics, international economics, macro- and microeconomics, public economics including labour and health economics*
- **economic history:** *economic and financial development, economic demography*
- **informatics/information systems:** *business intelligence, human-computer interaction, mobile industry dynamics, database design, sourcing strategies, information systems security*
- **statistics:** *data mining, statistical computing, multivariate methods, Bayesian methods, financial statistics*

## SCIENCE

- **astrophysics**
- **biology:** *animal biology, aquatic biology, conservation biology, general biology, plant biology*
- **bioinformatics**
- **molecular biology:** *general molecular biology, medical biology, microbiology, molecular genetics and biotechnology*
- **chemistry:** *analytical chemistry, biochemistry, chemical physics, inorganic chemistry, molecular biophysics, organic chemistry, physical chemistry, theoretical chemistry*

- **geology:** *petrology, geochronology, palaeoclimatology, glacial geology, palaeontology, sedimentology, marine geology*
- **mathematics:** *pure mathematics, applied mathematics, mathematical statistics, numerical analysis*
- **physical geography, ecosystem analysis and geographic information systems**
- **physics:** *general physics, materials science, particle physics, theoretical physics, biological physics and computational biology, photonics, nanophysics*
- **synchrotron radiation based science**

## SOCIAL SCIENCES

- **media and communication studies**
- **gender studies**
- **political science and peace and conflict studies**
- **psychology**
- **service management and service studies:** *retail, tourism, supply-chain management*
- **sociology**
- **strategic communication**
- **human geography, human ecology, development studies and geographic information systems**
- **social work**
- **sociology of law**



## ENGINEERING

- **civil engineering:** *infrastructure engineering, structural analysis and design*
- **environmental engineering:** *energy systems, process design, water resources engineering*
- **biotechnology:** *pharma, food, molecular biotechnology, biopress technology*
- **chemical engineering:** *materials, process design*
- **biomedical engineering:** *biomedical physics, biomechanics and rehabilitation, signals images and e-health*
- **information and communication engineering:** *communication systems, security, systems signals and control*
- **computer science and engineering:** *images and computer graphics, design of processors and digital systems, embedded systems, communication systems, software, software engineering*
- **electrical engineering:** *energy and environment, photonics and high-frequency electronics, integrated systems, biomedical engineering, production logistics and business, control and automation, signals and sensors*
- **engineering physics, mathematics and nanoscience:** *accelerators – physics and technology, computational mechanics, biological, ecological and medical modelling, computation and simulation, energy systems, photonics, financial modelling, high-frequency and nanoelectronics, nanophysics, control systems, theoretical physics, materials, nanobiomedicine*

- **industrial management and engineering:** *business and innovation, financial engineering and risk management, supply chain management, production engineering, software intensive systems*
- **mechanical engineering:** *computational mechanics, energy technology, automotive engineering, logistics and production management, mechatronics, product realisation, product development.*
- **surveying:** *geographic information science*

## ARCHITECTURE AND DESIGN

- **industrial design**
- **architecture:** *advanced architectural design, human shelter – urban space, spatial experiments*

## FINE ART

Malmö Art Academy offers courses within:

- artistic techniques
- art theory
- artistic interpretation

## MUSIC

Malmö Music Academy offers courses within:

- performance music
- church music
- composition
- music education

*Note that a portfolio is required for studies in industrial design, architecture, fine arts and music. Auditions may also be required for music.*

## MEDICINE AND HEALTH SCIENCES

Theoretical courses on Master's level are available within:

- biomedicine
- public health
- medical sciences

Clinical placements and thesis research opportunities are offered within:

- medicine
- nursing and midwifery
- speech language pathology
- audiology
- occupational therapy
- physiotherapy
- radiography

*Note that clinical placements with English speaking supervisors are available on a limited capacity to medical students.*



## LAW

- Swedish law
- EU law
- environmental law
- international human rights law
- company law
- legal history
- maritime and transport law
- criminal law
- moot court
- private international law
- US law

## HUMANITIES AND THEOLOGY

- languages and linguistics
- literature
- European studies
- Central and Eastern European studies
- Middle Eastern studies
- film
- archaeology and ancient history
- arts and cultural sciences
- history
- media and communication
- rhetoric
- philosophy
- cognitive science
- theology and religious studies

## SCANDINAVIAN/ SPECIAL AREA STUDIES

A large range of courses are offered in subjects such as Scandinavian culture and society and global issues of contemporary interest.

Courses cover topics such as environment and sustainability, Swedish social policy, education and social anthropology in Sweden, the Viking age, Scandinavian models of equity, diversity of the world languages, sustainable eating, critical animal studies, social innovation and more.

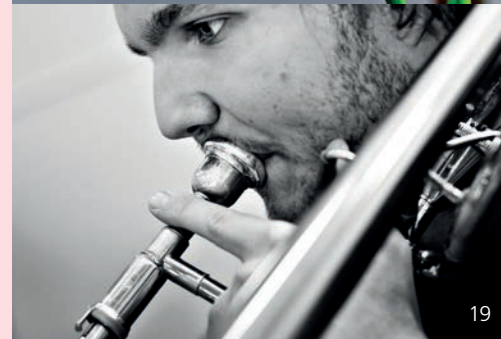
## SWEDISH LANGUAGE

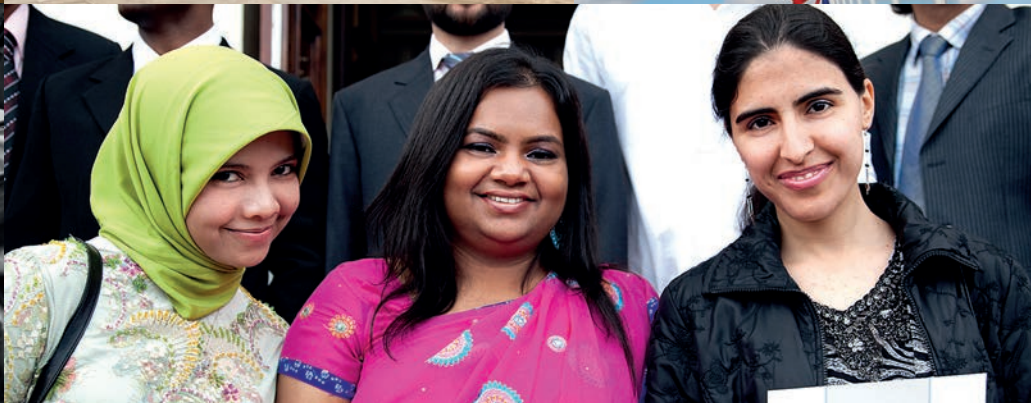
An introductory Swedish course is offered to all exchange students during the orientation weeks, before the start of the academic semester. Exchange students can also apply to regular Swedish language courses as part of their study plan. Courses are offered from level 1-5.

## SWEDISH-TAUGHT COURSES (EDUCATION IN SWEDISH)

Students with a background in Scandinavian studies or who have studied in a Nordic school system may be able to apply for courses with Swedish as the language of instruction.

Find all courses suitable for exchange students:  
[www.lunduniversity.lu.se/exchange-courses](http://www.lunduniversity.lu.se/exchange-courses)





# Bachelor's & Master's Degrees in English

## START YOUR GLOBAL NETWORK

Choosing international Bachelor's or Master's studies at Lund University gives you more than just a high-quality education. International programmes provide excellent opportunities to form a global network of professional colleagues, as well as establishing contacts locally in Sweden.

Lund University offers international students an extensive range of education with 100 Master's degree programmes, six Bachelor's programmes and 700 stand-alone courses all taught in English.

Many degree programmes taught at Lund University employ a multi- or interdisciplinary approach in an environment of exceptional academic talent and cultural diversity. All education is closely tied to current research and many of the courses are truly unique.

International guest lecturers and speakers from business, government, NGOs and research regularly feature as part of the curriculum to further connect studies to the professional world.

## SCHOLARSHIP OPPORTUNITIES

Academically talented international students have the opportunity to be awarded a prestigious merit-based scholarship:

- Lund University Global Scholarships (tuition fee)
- Swedish Institute Study Scholarships (full tuition and living costs)
- Selected international government-provided scholarship programmes
- EU-funded scholarships

[www.lunduniversity.lu.se/scholarships](http://www.lunduniversity.lu.se/scholarships)

## APPLICATION PERIOD

Apply between mid-October and 15 January for degree programmes starting in the autumn (late August).

## ENGLISH REQUIREMENTS

A minimum score of IELTS 6.5/ TOEFL 90 (or equivalent). Check exemptions at [www.universityadmissions.se](http://www.universityadmissions.se)

## KEY STEPS TO APPLY FOR BACHELOR'S AND MASTER'S DEGREE PROGRAMMES

**Now:** Find degree programmes and check entry requirements at: [www.lunduniversity.lu.se/programmes](http://www.lunduniversity.lu.se/programmes)

**Before 15 January:** Start application: Register, select and rank your programmes at: [www.universityadmissions.se](http://www.universityadmissions.se)

**Before 1 February:** Complete application: All supporting documents (including proof of English) due at University Admissions in Sweden. Pay application fee (SEK 900), or prove EU/EEA citizenship.

**Late March:** Admission results announced.

**Early April:** Deadline to accept admission offer, check for exact date at: [www.universityadmissions.se](http://www.universityadmissions.se)

**Before 15 June:** Pay first tuition fee instalment, then apply for residence permit from the Swedish Migration Agency (if non-EU/EEA citizen).

**Mid-August:** Arrival Day and Orientation.

**Late August:** Start of academic year.

# Master's Degree Programmes in English

## ARCHITECTURE & DESIGN

- Architecture
- Industrial Design
- Sustainable Urban Design

## BUSINESS, ECONOMICS & MANAGEMENT

- Accounting and Finance
- Economic Development and Growth
- Economic Growth, Population & Development
- Economics
- Entrepreneurship & Innovation
- European and International Tax Law
- Finance
- Information Systems
- Innovation and Spatial Dynamics
- International Economics with a Focus on China
- International Marketing & Brand Management
- International Strategic Management
- Management (MIM)
- Managing People, Knowledge & Change

## COMMUNICATION & MEDIA

- Film and Media Producing
- Media and Communication

- Strategic Communication
- Visual Culture

## ENGINEERING & TECHNOLOGY

- Biotechnology
- Disaster Risk Management and Climate Change Adaptation
- Embedded Electronics Engineering
- Energy-Efficient and Environmental Building Design
- Food Innovation and Product Design
- Food Technology and Nutrition
- Fire Safety Engineering
- Logistics and Supply Chain Management
- Water Resources Engineering
- Wireless Communication

## ENVIRONMENT & SUSTAINABILITY

- Environmental Management and Policy
- Environmental Sciences, Policy and Management
- Environmental Studies & Sustainability Science

## FINE & PERFORMING ARTS

- Critical and Pedagogical Studies
- Fine Arts

- Music – Performance Programmes
- Church Music – Performance Programmes
- Music – Interpretation and Composition Diplomas

## HUMANITIES, LANGUAGES & THEOLOGY

- Applied Cultural Analysis
- Archaeology – Theory and Practice
- European Studies
- Language and Linguistics: Arabic/Semitic Languages, Cognitive Semiotics, English, French, General Linguistics, German, Greek/Modern Greek, Latin, Phonetics, Romanian, Spanish, Swedish/Scandinavian Languages
- Literature – Culture – Media: English, French, General Literature, German, Russian, Scandinavian Studies, Spanish, Yiddish
- Religious Roots of Europe

## INTERNATIONAL STUDIES & SOCIAL SCIENCES

- Asian Studies
- Development Studies
- European Affairs
- Global Studies
- Human Ecology – Culture, Power & Sustainability
- Human Geography – Urban Studies
- International Development and Management
- Middle Eastern Studies
- Psychology
- Service Management, Supply-Chain

- Management
- Service Management, Retail
- Service Management, Tourism
- Social Studies of Gender
- Sociology of Law
- Welfare Policies and Management

## LAW

- European Business Law
- International Human Rights Law

## MEDICINE

- Biomedicine
- Medical Sciences
- Public Health

## SCIENCE

- Astrophysics
- Atmospheric Sciences & Biogeochemical Cycles
- Bioinformatics
- Biology, Animal Ecology
- Biology, Aquatic Ecology
- Biology, Conservation Biology
- Biology, General
- Biology, Plant Science
- Chemistry
- Geo-information Science and Earth Observation for Environmental Modelling and Management (GEM)
- Geographical Information Science
- Geology

- Geomatics
- Mathematical Statistics
- Mathematics
- Molecular Biology, Medical Biology
- Molecular Biology, Microbiology
- Molecular Biology, Molecular Genetics & Biotechnology
- Organizing Molecular Matter
- Physical Geography and Ecosystem Analysis
- Physics, Biological Physics & Computational Biology
- Physics, General
- Physics, Material Science
- Physics, Nanoscience
- Physics, Particle Physics
- Physics, Photonics
- Physics, Theoretical Physics
- Protein Science
- Synchrotron Radiation-Based Science



## BACHELOR'S DEGREE PROGRAMMES

- Development Studies
- Fine Arts
- International Business
- Mathematics
- Physics
- Physical Geography & Ecosystem Analysis



## Pre-Master's Preparation Programme

---

Academically talented students who are looking to apply to specific Master's programmes at Lund University have the opportunity to prepare for their studies through a new Pre-Master's Preparation Programme, offered by **ONCAMPUS** Lund Sweden – a part of Cambridge Education Group.

The Pre-Master's Preparation Programme is available as a two and a half or three-term programme, with a start either in November or September, depending on your current level of English proficiency. The programme is a comprehensive academic and English language programme with up to 26 hours a week of class time.

In order to be eligible for the Pre-Master's Preparation Programme you must have completed your Bachelor's degree and meet the entry requirements of the chosen Master's programme at Lund University (with the exception of the English language requirement) and have an overall IELTS score of at least 5.5.

For information on possible progression degrees, fees, requirements and the application process, please refer to:  
[www.oncampus.global/europe/oncampus-lund-sweden](http://www.oncampus.global/europe/oncampus-lund-sweden)  
Email [admissions@oncampus.global](mailto:admissions@oncampus.global).

**ONCAMPUS** Lund also offers a 4-week Summer Preparatory Programme for students who are admitted to a Master's programme at Lund University (in any subject area).  
[www.lunduniversity.lu.se/summer-preparatory-programme](http://www.lunduniversity.lu.se/summer-preparatory-programme)

**ONCAMPUS**  
LUND SWEDEN

## Study Abroad Swedish Language Programme

---

The Study Abroad Swedish Language programme gives non-EU students the chance to experience a unique study abroad experience, focused on the Swedish language. The programme includes a two-semester option covering levels 1-8 and an intense, single-semester option covering levels 1-4 or 5-8. To be eligible you must have completed upper-secondary school studies and meet English language proficiency "English 6" (IELTS 6.5 or TOEFL 90).  
[www.lunduniversity.lu.se/study-abroad](http://www.lunduniversity.lu.se/study-abroad)

## Study Abroad Packages for Organisations

---

Lund University designs tailored study abroad packages for other universities, national scholarship programmes or other organisations which enable their students to study specific subject areas or Scandinavian special interest topics. Study Abroad packages can range from short courses during a semester, a summer programme or up to a year of full-time studies.  
E-mail: [studyabroad@er.lu.se](mailto:studyabroad@er.lu.se)

## Massive Open Online Courses

---

Lund University offers a selection of courses that are open to anyone with an interest in the subject, regardless of previous academic experience. The courses are taught online, in English, and are free of charge. Participants can request a certificate on completion of these courses, however no university credits are awarded. [www.lunduniversity.lu.se/moocs](http://www.lunduniversity.lu.se/moocs)

Examples of offered MOOCs:

Greening the Economy: Lessons from Scandinavia

Greening the Economy: Sustainable Cities

Global Perspectives on Sexual and Reproductive Health and Rights

Introduction to European Rights Law

## PhD Studies

---

Lund University offers PhD studies at all eight faculties. There are no tuition fees for PhD studies at Lund University. Doctoral studentships are used as the primary form of funding for doctoral education, but use of external funding and scholarships is also permitted – i.e. scholarships established by an organisation other than Lund University.

A doctoral studentship means that the University employs the doctoral candidate as a staff member and pays a salary whilst the candidate undertakes their doctoral studies. In parallel to the doctoral education programme, the doctoral candidate may work with administrative and teaching duties (no more than 20% of a full-time position).

PhD studies are organised at department level. You apply directly to the department when PhD positions are advertised. You contact the department directly regarding PhD studies with external scholarships or funding.  
[www.lunduniversity.lu.se/phd](http://www.lunduniversity.lu.se/phd)





## Erasmus +

---

Lund University participates in the Erasmus+ programme, including mobility and scholarship opportunities for students, researchers and staff.

[www.lunduniversity.lu.se/erasmus+](http://www.lunduniversity.lu.se/erasmus+)

## Professional Education

---

Lund University offers a range of professional education, available to international companies, organisations and authorities aiming to develop their business and the expertise of their staff. For international public and private sector organisations, Lund's professional education gives access to the latest research and the best lecturers in their particular field, for up-to-date professional development of the highest quality. To apply for or to discuss professional education opportunities and international training programmes from Lund University contact [info@education.lu.se](mailto:info@education.lu.se). [www.lunduniversity.lu.se/commissioned-education](http://www.lunduniversity.lu.se/commissioned-education)

## Lund University Alumni Network

---

The Alumni Network is a professional and social network for all who have studied at Lund University. Over 30,000 alumni located across the globe have joined this network, which is a great resource for career development, professional networking and keeping in touch with classmates. Future and current students can utilise the network to gain insight into studies and student life at Lund University, seek graduate and career advice and to connect with alumni during studies, after graduation and throughout their working life.

[www.lunduniversity.lu.se/alumni](http://www.lunduniversity.lu.se/alumni)



Editors: Megan Grindlay and Maria Lindblad. Layout: Ida Thelander and Anna Ramsten.  
 Photography: Front cover: Kennet Ruona, Gunnar Menander, Johan Persson. 3. Kennet Ruona, Universitetsbibliotekets arkiv, Lars Mongs. 4-5. COBE courtesy of Science Village Scandinavia, Imagebank Sweden: Per Pixel Petersson. 6. Kennet Ruona, Johan Persson, liseykina/Shutterstock. 7. Kennet Ruona. 8. Apelöga, Imagebank: Melker Dahlstrand, Kennet Ruona, Lasse Strandberg. 9. Imagebank: Carolina Romare. 10. Johan Persson, Map: Petter Lönnegård. 11. Charlotte Carlberg-Bärg. 12. Johan Persson, Kennet Ruona. 14. Håkan Kogg Röjder. 15. Mikael Risedal, Gunnar Menander, Charlotte Carlberg-Bärg. 16. Johan Persson. 17. Johan Persson, Apelöga. 18. Charlotte Carlberg-Bärg. 19. Kennet Ruona, Johan Persson. 20. Johan Persson, Mikael Risedal, Kennet Ruona, Charlotte Carlberg-Bärg. 23. Lasse Strandberg. 24. Charlotte Carlberg-Bärg, Ragnhild Möller, Lasse Strandberg. 25. Myfab, Johan Persson, Apelöga. 26. Johan Persson. 27. Lasse Strandberg, Kennet Ruona. 28. Map: Petter Lönnegård.  
 Issue: 12 000 copies. Printed by: Taberg Media Group AB, Sweden, July 2016.



## More information

---

Website: [www.lunduniversity.lu.se](http://www.lunduniversity.lu.se)

Facebook: [www.facebook.com/lunduniversity](https://www.facebook.com/lunduniversity)

Find us on LinkedIn, Twitter, Instagram and YouTube



LUND UNIVERSITY  
PO Box 117  
SE-221 00 Lund  
Sweden  
Telephone +46 46 222 00 00  
[www.lunduniversity.lu.se](http://www.lunduniversity.lu.se)