



Europa-Universität  
Flensburg



*Studieren an der nördlichsten  
Universität Deutschlands.*



***Dear Readers,***

Our university is situated on the border of Germany, adjoining Scandinavia, near the heart of Europe. It is located in a region characterised by cross-border relations.

We, the Europa-Universität Flensburg, embrace this regional characteristic by preserving it whilst, at the same time, remodelling it to match a European context. We are a Europa-Universität that sets great store by its mission statement – diversity, justice, sustainability – and we dream a pan-European dream – one of intercultural encounters and an understanding of others, of justice, solidarity and human rights.

We are a Europa-Universität specialising in the field of educational sciences. This is unique. Modern teacher training needs a perspective that modernises traditional regional and national methods of teaching. Our Flensburg Model of teacher training is relevant today, both in a practical and international arena. It is a cause close to our hearts to train a generation that understands Europe and promotes its cultural diversity. As well as running counter to the European idea, racism and xenophobia, religious furore and birth rights are the enemies of unprejudiced academic research and teaching. We want our students to not only experience school and the world of work, the economy and society but also to develop ideas as to how we can improve and transform these areas.

We hope this brochure raises your curiosity about our university. Thank you for your interest.

**Prof. Dr. Werner Reinhart,**  
***President of the Europa-Universität Flensburg***



## ***Our mission statement:***

■ **We want to *open up* new horizons.** ■ ■ ■ ■

**We are a lively university**

**that *evolves* continuously.**

■ We work, teach and research in a way that ■ ■  
■ *overcomes* borders: For justice, sustainability ■ ■  
■ and diversity in education, schools and ■ ■ ■  
■ the world of work in the economy and in ■ ■  
■ society in culture and the environment. ■ ■



*Germany's northernmost university is a young university situated in the German-Danish border region. Founded in 1946 by the British, it was awarded university status in 2000 and in 2014 it became a "Europa-Universität". The Europa-Universität Flensburg sees itself as a modern university that is open to new developments, encourages dialogues and seeks to find answers to key questions of the future.*



# Why study at EUF ?

**European perspective:** We practice on a small scale what Europe is about on a large scale. In the German-Danish region we overcome internal and external boundaries. Accordingly, we educate people who live, research and develop the idea of European integration.

**Internationality:** Our cosmopolitan student population comes from over **80** countries so there is ample opportunity for intercultural exchange. Some of our courses are taught in English and we also maintain contacts with partner universities all over the world.

**Modern university:** Participation and diversity define our concept of education. Our degree courses are characterised by research-based learning, interdisciplinarity and a strong link between theory and practice.

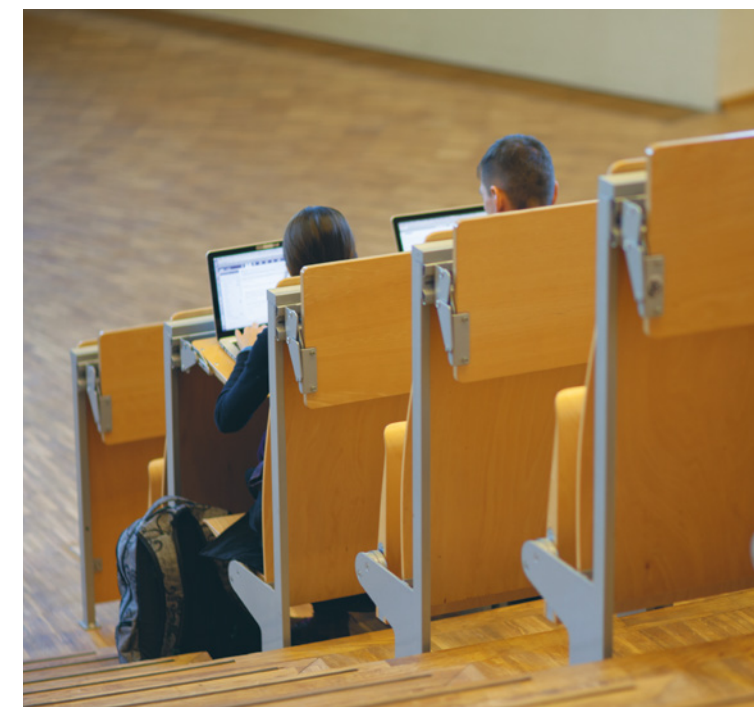
**Cross-border studies:** Syddansk Universitet and the Europa-Universität have worked together for over **20** years on joint degree courses leading to dual degrees.

**The „Flensburg Model“:** Becoming a teacher is a journey for life. Our “Flensburg Model” teacher training offers our students the best possible path for their future career.

**Good pastoral care:** Our University has a friendly and informal atmosphere and the distances on campus are short. Providing support to our students is one of our key priorities.

**Studying by the sea:** Our green campus is located close to the Flensburg fjord, one of the most beautiful sailing areas in Europe. Beaches, sea and wind characterise the region.

**Quality of life:** Situated directly on the fjord, Flensburg, with its impressive old buildings, low rents, lively cultural scene and close proximity to Scandinavia offers excellent study and living conditions.





## Studies and teaching

With around **5000** students and currently fourteen degree courses, the Europa-Universität Flensburg is a small university. **250** scholars, including some **75** professors, carry out research and teach in ten institutes. The University's areas of focus are teacher training, international management, environmental sciences/sustainable development and interdisciplinary European studies. The pursuit of a sustainable society is at the heart of all our courses. In all our courses, students learn how to adopt different perspectives and to think and work across disciplines.

The German-Danish Master's Programme **"European Studies"** focuses on the special role of the regions in Europe from a political, socio-economic and cultural perspective.

The Master's degree programme **"Education in Europe"** adds a European and international perspective to teacher training.

The Master's degree programme **"Culture-Language-Media"** also greatly benefits from the border region location. The focus here is on cross-border cultural understanding.

The Master's degree programme **"Energy and Environmental Management"** focuses on ecologically sustainable energy systems.

The Master's degree programme **"Vocational Education"** is aimed at students who wish to become teachers at industrial and technical vocational schools.





## Teacher Training: The Flensburg Model

The profession of a teacher is fulfilling, complex and challenging because daily life in a classroom rarely goes exactly according to plan. Pupils come from diverse cultural, social, linguistic and religious backgrounds and are exposed to considerable pressure to perform even at an early stage in their schooling. The demands of a competitive society present a particular challenge for teachers. Their pupils are meant to be able to cope professionally and to grow up as self-confident, strong individuals who help to shape society.

The essential characteristics of our *Flensburg Model* of teacher training include:

- Educational sciences (pedagogy, psychology, teaching methods, education) form a considerable part of the course.
- The Bachelor's degree course offers flexibility and afterwards students can go on to study a teaching-related or other Master's degree course.
- Technical disciplines and teaching methodology are closely intertwined in each of the degree courses.
- All prospective teachers acquire skills in German as a second language, inclusion, dealing with heterogeneity, diagnosis and support, media education and school development.
- Students undergo intensive practical training – an orientation internship at the start of the course, a subject-related didactical internship half way through the Bachelor's degree course and a practical semester during the Master's degree course.
- Studying abroad and/or an internship abroad will be supported: both these opportunities allow students an opportunity to experience that schooling can work very differently abroad in comparison to the way it works in Germany.

In no other European country does educational success depend so much on social background as it does in Germany. We want to do our bit to help change the situation.



## Management studies in Flensburg

European integration, globalisation and migration mean that national and cultural boundaries disappear. Actions taken by managers in companies, administrative bodies and organisations have therefore become more dynamic, complex and demanding. Management studies in Flensburg therefore have an international and interdisciplinary focus from the outset.

The economic modules are supplemented by language training and appropriate cultural studies. Students can elect to either focus on Spanish or Danish. Courses are taught in German, English, Danish and Spanish. As courses are offered in cooperation with the Syddansk Universitet, our students have the opportunity to acquire dual German-Danish degrees.

Graduates of the Europa-Universität Flensburg will become responsible managers who work in a sustainable manner. This is why the social impact as well as the ethical dimension

of economic structures and operational practice also play an important role in our courses.

The key areas in teaching and research are strategy and organisation, organisational behaviour and human resource management, small and medium-sized enterprises and entrepreneurship, educational research, Europe in the age of globalisation and diversity and equality in the labour market.

Teaching, research and studying take place close to the city centre in the brick building of the former nautical college opposite the Flensburg Brewery. Our courses have a friendly, informal and supportive atmosphere.





# Research

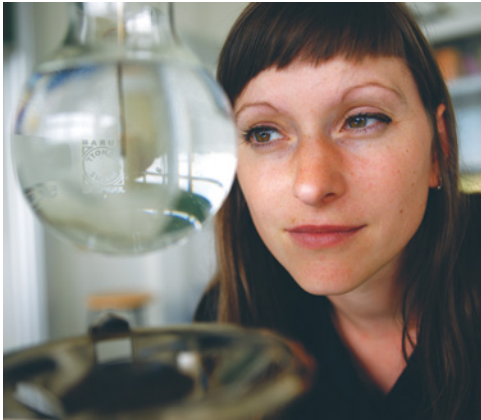
The Europa-Universität Flensburg focuses its research on finding answers to socially relevant issues and offering contributions to the scientific discourse. We focus on the following areas of research:

*Educational Sciences, Economics, Environmental Sciences / Sustainable Development, Interdisciplinary Research on Europe*

In addition to their own areas of research, our scholars also work with colleagues from other fields, institutes and universities in joint research centres. These research centres provide them with the opportunity to tackle complex problems using methods from different scientific disciplines and to jointly develop new theoretical approaches and innovative proposals.

The Europa-Universität Flensburg is home to the following research centres:

- Educational Sciences**
- “The Centre of Teacher Training” (ZfL)
  - “The Centre for Education - Lessons - School - Socialization” (ZeBUSS)
  - “The Institute of Contemporary and Regional History of Schleswig-Holstein” (IZRG)
  - “The Centre for Lesser Used Languages and Regional Languages” (KURS)
- Economics**
- “Dr. Werner Jackstädt Centre for Entrepreneurship and Medium-Sized Companies” (DWJZ), a joint institute of the University and the University of Applied Sciences Flensburg
- Environmental Sciences / Sustainable Development**
- “The Centre for Sustainable Energy Systems” (ZNES), a joint institute of the University and the University of Applied Sciences Flensburg
  - “The Norbert Elias Centre for Transformation Design and Research” (NEC)
  - “The Centre for Environmental Education”, in cooperation with the city of Flensburg (currently under development)
- Interdisciplinary European Studies (currently under development)**
- “The Centre for European Media Research and Education” a joint institute of the University and the University of Applied Sciences Flensburg
  - “The Centre for Interdisciplinary Research on Europe”





# Europa-Universität

Its position on the border is ideal for a Europa-Universität that wants to live the European dream of international dialogue and exchange and wants to explore its reality.

The *Europa-Universität Flensburg* and the Danish *Syddansk Universitet* have been working together for over 20 years. Students commute between Flensburg and the campus in Sønderborg, Denmark, 40 kilometres away. The joint degree courses in economics and social sciences offer students the opportunity to gain degrees from both universities simultaneously as well as providing them with insights into Scandinavian culture.

Even outside of the field of “Interdisciplinary Research on Europe”, the reference to Europe plays a role in the majority

of courses. Many are taught in English, others are taught in several languages. Students may study abroad or complete an internship at a school overseas during their Bachelor’s degree course. To live and study overseas is an opportunity available to all students, enabling them to benefit from international experience and gain intercultural competence. This will help them recognise pupils’ diversity and ensure that equal opportunities are provided in schools.

International cooperations and exchanges are coordinated by our International Centre (IC). The International Centre also looks after international PhD students and visiting researchers and offers advice on opportunities for study, internships and language courses abroad.



*Young people from more than 80 nations study on our campus in Flensburg. Approximately 350 of the roundabout 5000 students have a foreign passport.*





# Campus

A breath of fresh sea air, the sound of seagulls crying and the vast, unlimited view make the Flensburg Campus so very special. Possibly the greenest campus in Germany, the University is situated on the Sandberg, not far from the city centre. The Europa-Universität Flensburg and the University of Applied Sciences Flensburg share the same campus, canteen, lecture hall and main library. Buses run regularly between the town and the campus. Anyone who chooses to cycle here gets a good workout.

Lectures and research are conducted in the main lecture hall, “Audimax”, the Main Building, the Extension Building and in the former nautical college at Munketoft. All lecture halls and seminar rooms are barrier-free and equipped with multimedia equipment. WiFi is available on campus and in the off-campus locations. Students can address their questions and concerns to the many advisory services which offer help in advance of and during studies as well as beyond.

The 30-hectare green campus accommodates the longest disc golf course in Germany. This is no coincidence; sport is very popular on campus and is a high priority for the University. Measuring 800 square metres and offering 200 courses, 50 different sports, long opening hours and an excellent support service, the Sports Centre of the Europa-Universität Flensburg is one of the best in Germany.

Every year the debating club “OstseeMUN” organises and hosts the world’s only cross-border “Model United Nations Conference”, simulating the work of the United Nations. In EUF’s exhibition and meeting room, “Modul 1”, situated in the town centre, students create and implement artistic projects. For members of the Campustheater, the University drama group, the whole world is a stage. Those who like music can join the University Choir, the Big Band or the University Orchestra. The Flensburg Campus – green, lively and versatile.





# The region

Sønderjylland, or Southern Jutland, the territory of the former Duchy of Schleswig, is a special region. For centuries it has been the Danish-German border region. For a long time the relationship between Germany and Denmark was dominated by war, the shifting of borders and the German occupation of Denmark in World War II. Today, the region’s multi-lingual inhabitants include Germans, Danes and Frisians who live peacefully together on both sides of the border and celebrate joint literature and music festivals.

Today, the region between the North Sea and the Baltic Sea is a gateway to Scandinavia. The laid-back attitude of the Danes rubs off on their neighbours. Far away from the metropolitan centres, right in the middle of one of the most beautiful holiday regions in Germany, people live a more relaxed lifestyle. There is always time for walks, surfing, sailing or beach parties.



*“The German-Danish border is beautiful. It passes through a picture-perfect fjord, follows a hilly shore, separates fields, groves and meadows, stretches out along lakes rich in fish, it divides pasture land on which German and Danish sheep ponder about their difference, without coming to any result.”*  
— Siegfried Lenz



# The city of Flensburg

The Flensburg merchant fleet sailed the seven seas under the Danish flag for **400** years. Flensburg’s earlier wealth came from the sugar, rum and slave trades. Guided tours and an exhibition in the Maritime Museum in Flensburg recount this dark period in the town’s history.

Given its current mix of German and Danish culture, the fact that the city belonged to the Kingdom of Denmark for many centuries is still unmistakable today. Its centuries-old history as a shipping, port and trading city is evidenced by the open-mindedness of its **90,000** inhabitants. The sea still plays a key role, as countless masts of historical and modern

sailing ships from all over the world gently rock in the marinas and ports along the fjord.

As Flensburg suffered little damage during World War II, there is an abundance of beautiful and inexpensive flats in Art Noveau buildings and captain’s houses plus boutiques, bistros, rum distilleries and wine bars in historic merchant houses and courtyards. The heart of Flensburg is the harbour point or “Hafenspitze”. This is where Flensburg stalwarts meet in shorts from as early as April for a game of “KUBB”, a walk along the pier, a barbecue and a beer, to eat fish buns or make music.



*Open-minded, but cosy, small but not cramped, with tradition, but not stuffy – Flensburg is a tolerant and welcoming place of international exchange*



