



RCSI

UNIVERSITY
OF MEDICINE
AND HEALTH
SCIENCES

RCSI LEADING THE WORLD TO BETTER HEALTH

MEDICINE PHARMACY PHYSIOTHERAPY



NON-EU PROSPECTUS

CONTENTS

- 01 **WHO WE ARE 04**
- 02 **WHY CHOOSE RCSI? 06**
A Singular Focus on Healthcare
Reputation and Independence
High-Impact Research
Early Patient Contact
Experiential Opportunities
Hands-On Teaching Environment
Global Impact
- 03 **WHAT YOU WILL EXPERIENCE 10**
Life in Dublin
City Campus Living
Student Events
Clubs and Societies
Facilities
Student Opportunities
Student Welfare
Education and Clinical Network
Living Space
- 04 **WHAT YOU WILL BECOME 26**
Career Development
Mentor Network
Global Graduates
- 05 **OUR PROGRAMMES 30**
Medicine (Undergraduate)
Medicine (Graduate Entry)
Pharmacy
Physiotherapy
- 06 **APPLICATION ESSENTIALS 46**
CONNECT WITH US 48



MESSAGE FROM PROFESSOR CATHAL KELLY



Professor Cathal Kelly
RCSI CEO

RCSI MISSION

The RCSI mission is to educate, nurture and discover for the benefit of human health. In leading the world to better health our vision is to create healthcare leaders who make a difference worldwide.

Thank you for your interest in studying with RCSI.

I am delighted to present to you our 2021 Undergraduate Prospectus. Here you will find an overview of our University and the programmes that RCSI offers in the disciplines of Medicine, Pharmacy and Physiotherapy. We also provide you with a sense of the student experience that you can expect at RCSI and how undertaking one of these courses will place you in the best possible position in terms of your future healthcare career.

The COVID-19 pandemic has undoubtedly presented RCSI with one of the most challenging times in our 236-year history. However, our student body, our faculty and our support teams have worked in close partnership to ensure that our students have been kept safe and that disruptions to their academic experience have been minimised.

As one of the world's leading health sciences Universities, RCSI has also played its part during this time on both the national and international stages. Our clinicians, our researchers, our academics and our alumni have been to the forefront in terms of caring for patients affected by COVID-19, advising on public health policy responses to the virus, and also in researching effective treatments.

For the coming academic year, RCSI has put in place very robust measures across all campuses to protect the safety and the well-being of our students. While it is difficult to predict with certainty what the academic year commencing in autumn 2021 may bring, RCSI will be taking all necessary steps to keep our students safe, and to ensure that they have an interesting and enjoyable university experience.

I trust that you will find this prospectus informative. I greatly look forward to seeing you on campus.

Professor Cathal Kelly
CEO, RCSI

01 WHO WE ARE

At the Royal College of Surgeons in Ireland, everything we do is designed to serve patients.

Our university was created – through the granting of a royal charter on 11 February 1784 – to set and support professional standards for surgical training and practice in Ireland. This surgical heritage continues to shape our approach to education, research and service today. At its very essence, surgery is the most exacting of disciplines, demanding professionalism, precision, skill and expertise at the highest level.

We are an innovative, world-leading international health sciences education and research university with undergraduate and postgraduate schools and faculties across the health sciences spectrum. We are home to numerous healthcare institutes as well as leading research centres that drive pioneering breakthroughs in human health. Located in the heart of Dublin, with international campuses in Bahrain and Malaysia – and a student community of over 60 nationalities – we have an international perspective on how we train tomorrow’s clinical professionals today.

Meet people from every corner of the globe and find the club or society that suits you.



A deep, professional responsibility to enhance human health through endeavour, innovation and collaboration in education, research and service informs all that we do. We welcome students and researchers into programmes of academic excellence. They will establish lifelong relationships with a community of clinically led colleagues, who will nurture and support them, enabling them to realise their potential to serve our global patient community.

We are an independent, not-for-profit body and remain committed to institutional independence, service, academic freedom, diversity and humanitarian concern. Our independence enables us to chart our own course in the service of excellence in human health. Placing the patient at the centre of all that we do, our values of respect, collaboration, scholarship and innovation continue to unite and direct our purpose.



02 WHY CHOOSE THE ROYAL COLLEGE OF SURGEONS IN IRELAND?

A SINGULAR FOCUS ON HEALTHCARE

Healthcare is all we do. Every decision, every lecture, each practical demonstration and research study focuses on enhancing human health. You will be part of our dynamic community of inspiring international educators, experienced clinicians and ground-breaking researchers – all working to improve health outcomes.

We are unique in offering the entire medical education spectrum, from undergraduate and postgraduate to continuous professional development.

This big-picture view helps us understand, more than most, what it takes to develop 21st-century healthcare professionals, and we shape our offering accordingly.

REPUTATION AND INDEPENDENT PURSUIT OF EXCELLENCE

RCSI is one of the top 250 (top 2%) universities worldwide in the 2021 Times Higher Education World University Rankings and ranks 2nd out of all universities in the Republic of Ireland. RCSI ranked Number ONE in the world for Good Health and Well-being in impact rankings.

Unlike most medical schools, which are part of large multi-faculty, government-funded universities, RCSI is an independent, not-for-profit institution. This independence allows us to pursue our own priorities in the pursuit of excellence in medical education, training and research. We set the pace that others follow. One example of this is our investment in 2017 in opening Europe's largest clinical simulation centre, developed to ensure that we continue to produce graduates with excellent communication and clinical skills.

HIGH-IMPACT RESEARCH

With our focus on clinical and patient-centred research, we are continually seeking out ground-breaking discoveries to address the health challenges of our time. Our research agenda drives scientific breakthroughs, innovations and insights that allow us to understand and respond quickly to the world's changing healthcare needs.

We have the highest research citation rate in Ireland and our field-weighted citation is double the world average. That means we do not just teach at RCSI, we are deeply committed to exploring and solving healthcare's greatest demands, as they exist today. Our insights enhance patient treatment and care, while attracting the very best healthcare professionals in their fields to teach at RCSI. We strategically invest in our researchers and research facilities to deliver on our mission of leading the world to better health.

RCSI KEY RESEARCH THEMES

1. Biomaterials and Regenerative Medicine
2. Cancer
3. Neurological and Psychiatric Disorders
4. Population Health and Health Services
5. Surgical Science and Practice
6. Vascular Biology

Our leading clinicians are your leading teachers.

EARLY PATIENT CONTACT

From the start of your training, you will apply what you learn in the lecture theatre to patients and clinical situations in RCSI teaching hospitals. These early clinical experiences are a combination of patient case studies, consultation labs, medical actors, volunteer patients and high-fidelity clinical simulator technologies.

EXPERIENTIAL OPPORTUNITIES

During your time at RCSI, you can participate in our research summer school and clinical electives.

Research Summer School

From year one, you can spend your summer as part of a medical research team conducting clinical or laboratory research while receiving a financial stipend from RCSI.

Clinical Electives

You can also participate in electives involving direct patient clinical care in some of the world's leading hospitals or in developing parts of the world.

Our dedicated team helps applicants source and manage these experiences through our network of strategic partnerships, including the Johns Hopkins Hospital Group, Columbia University Medical Center and the Mayo Clinic in the United States of America.



HANDS-ON TEACHING ENVIRONMENT

We are home to Europe's largest clinical simulation facility. From the earliest stages, you will combine classroom learning with hands-on experience in simulated and real clinical environments at RCSI teaching hospitals. You will learn anatomy through regional cadaveric dissection and benefit from being taught by working surgeons and healthcare professionals.

Our programmes provide you with the breadth of knowledge and range of skills you need to shape your career. RCSI's curriculum is constantly evolving to ensure that you have everything you need to be a successful doctor, physiotherapist, pharmacist or researcher. Our approach to teaching recognises the importance of balancing medical knowledge with experiential learning.

Internationally, RCSI has an outstanding reputation for innovation in surgical training, medical education and scientific research.

We are home to
Europe's largest clinical
simulation facility.





GLOBAL IMPACT

As a leading institution in healthcare, medicine and research, we advance health and well-being worldwide. We continuously seek ways to further our humanitarian goals and make an impact on a global scale. An example of this is our partnership with the College of Surgeons of East, Central and Southern Africa, COSECSA.

RCSI and COSECSA have been working together to increase the number of trained surgeons and to improve the quality of surgical care in sub-Saharan Africa. The aim of the programme is to create a sustainable training institution, which can rapidly increase the number of surgical specialists and improve surgical care in the region.

In addition to our Dublin campus, RCSI also has universities in Bahrain and Malaysia. The RCSI Medical University of Bahrain is a constituent university of RCSI and is licensed by the Higher Education Council in the Kingdom of Bahrain as an independent private university.

Like RCSI Dublin, it is a not-for-profit health sciences institution focused on nursing and medicine programmes along with research to drive positive change in all areas of human health worldwide.

The RCSI and UCD Malaysia Campus (RUMC) is Malaysia's first accredited private medical school, owned and established by the Royal College of Surgeons in Ireland (RCSI) and University College Dublin (UCD). This campus offers a medicine programme only. Students studying in this programme spend the first two years in Dublin and complete the remainder of the degree in Penang.

03 WHAT YOU WILL EXPERIENCE

LIFE IN DUBLIN

Dublin is the perfect city for student living. It is exciting, multicultural, safe and easy to navigate. The RCSI main campus is right in the heart of the action and across from one of the most beautiful parks in Europe, St. Stephen's Green. The city is packed with attractions for local and international students alike. Whether you are looking for coffee houses, theatres, music, sports fixtures, museums or any form of entertainment, our cosmopolitan capital caters for every taste.

Dublin is a coastal city with incredible natural beauty, from the beaches and walks along Dublin Bay to the forested Wicklow Mountains. There are many interesting places to visit and explore, most of which are easily accessible through a convenient public transport network.

The capital has a population of 1.5 million, including 75,000 third-level students. This makes the city big enough to have a lively social life and small enough for international students to feel they are part of Dublin life.

CITY CAMPUS LIVING

Our city-centre campus is located in the heart of Dublin and is built to meet the needs of your present and future.

Perfectly situated to provide you with a balanced life during your studies, the campus is easily accessed by public transport and surrounded by cultural hotspots, shops, cafés and restaurants. You will study at our purpose-built facilities, including Europe's largest clinical simulator and our original buildings. Two centuries of graduates committed to improving patients' lives launched their careers in these exact spaces.





STUDENT EVENTS

University life needs to be a healthy balance between study and recreation. Your workload will be demanding, but we also want you to experience the full spectrum of life at RCSI. Our numerous clubs and societies are active throughout the year and there are always fantastic student events to allow you to unwind after a busy week of study.

Some of the most memorable RCSI moments happen outside the classroom. During the year, you might raise vital funds for charity, achieve your sports goals and go to the best parties in town. The events calendar is packed all year round. Popular events include the College Ball, International Food Night, the Chocolate Ball and the Teddy Bear Hospital. There is also a month-long series of events as part of RCSI Cultural Diversity Month which showcases the culture, traditions, food, music and dance from RCSI students' home countries.

Our rugby team travels to France each year to compete against a Parisian medical school and our runners have competed in the Boston Marathon for over 20 years.

If you like the great outdoors, the RCSI Climbing and Mountaineering Club organises a number of members' climbing trips to some of the highest peaks in Ireland.

Due to the global Covid-19 pandemic, we cannot predict with certainty at this point what student events as well as clubs and societies activities will look like in the 2021/2022 academic year.

CLUBS AND SOCIETIES

Our clubs and societies allow you to become immersed in a mixed community of Irish and international students.

While the academic programmes are demanding, it is essential that you take time away from the books to find a suitable study/life balance. We have more than 35 active clubs and 40 active societies. There is truly something for everyone.

Extracurricular activities help you develop strong interpersonal skills, values and attitudes. Our graduates often remind us of the importance of participating in student life and how it gave them the edge in their postgraduate training and chosen careers.

The student societies include drama, music, photography and publishing. Our careers societies include paediatrics, neuroscience, pathology and ophthalmology. Sports clubs include archery, athletics and climbing while team sports include soccer, rugby, hockey and basketball. The full list of clubs and societies is shown on the RCSI website.





FACILITIES

Library

The RCSI Library provides services to meet the learning and research needs of our healthcare practitioners. One library is located in our city-centre campus and there is another in Beaumont Hospital. You will have access to a wide range of study and social spaces, an extensive collection of biomedical resources and an expert library team. Library spaces are designed with students in mind, providing a high-tech learning environment to support both collaborative and individual study.

We can assist you in evaluating, using and managing information, as this is an integral part of your studies. The library team supports this through curriculum sessions, a dedicated team at information desks, online guides and resources plus one-to-one consultations throughout the year.

As you progress through your programme, library staff are there to help you find and use information at all stages of your studies. The Library is also proud to preserve RCSI's unique historical materials, covering over two centuries of medical and healthcare history in Ireland.

You have access to this wealth of medical history and the opportunity to engage with these collections through exhibitions, visiting the Heritage Collections Reading Room and/or undertaking research projects as part of the Research Summer School.

Fitness Centre

The sports and fitness centre spans two floors and provides students with the very best facilities to help balance academia with a fit and healthy lifestyle. The extensive opening hours mean that it is open when it suits you, be it an early session to wake you up, a lunchtime workout to invigorate your afternoon's study or a late-night routine to finish your day.

The fitness centre caters for everyone, from complete beginners to regular exercisers, and is fitted out with premium gym equipment. We also have a full intervarsity regulation sports hall that can host many indoor sports and is freely accessible to all of our students.





Simulation Centre

The largest clinical simulation facility in Europe was opened in 2017 and is located in our St. Stephen's Green Campus. It was built to ensure that RCSI can continue to graduate healthcare professionals with superior clinical skills, the teaching of which has become challenged by changes in how patients receive treatment in the hospital setting. Improvements in healthcare delivery have ensured that more and more patients receive medical procedures on a day-case basis.

While these rapid procedures are beneficial for the patient, they present a real challenge for medical schools, particularly in training early clinical and communication skills in clinical environments where an increasing number of patients are treated on a day-case basis. This results in hospitals that are often filled with patients who are older, more unwell and therefore less suitable for students to practice their early patient skills.

The Clinical Simulation Centre contains a virtual hospital, with wards, outpatients' clinics and a full operating theatre and trauma facility. This facility allows us to train our students using safe, structured and repeatable teaching models where students can develop confidence and competence in their patient management skills before engaging with real patients in the hospital setting.

This form of healthcare teaching represents a huge leap forward for clinical training not just in RCSI but also internationally, cementing RCSI's place at the forefront of healthcare education.

STUDENT OPPORTUNITIES

As part of our mission to create well-rounded, clinically distinguished healthcare professionals, we challenge our students to participate in academic opportunities and extracurricular activities. There is a range of opportunities open to you while studying at RCSI and participation can provide clarity around the area of healthcare that you wish to pursue after graduation. These activities will not only help to build your skillset, but will also give your professional career the best possible start.


Research Electives

Research Summer School

RCSI provides you with opportunities to undertake clinical and laboratory research as part of a medical research team. Participation is strongly encouraged and you can take part from year 1 of your studies. You have the opportunity to work as part of a research team over an 8-week period while receiving a financial stipend from RCSI for your contribution. On completion of your project, you will have the opportunity to present your findings at the RCSI Annual Research Symposium, which takes place in April each year. Students can receive awards for their research both at national and international meetings in addition to having their research published in medical and scientific journals.

Student Medical Journal

The RCSI Student Medical Journal (SMJ) publishes student research, ranging from basic laboratory science and clinical work to humanities analysis of medicine in society. The goal of the RCSI SMJ is to encourage student research, writing and submission for publication.

Publication in the journal ensures your research reaches a broad international readership through its print and electronic versions (rcsismj.com). 

Funded Research Opportunities

Each year, two Anatomy Summer Studentships in an institutional research laboratory are offered to RCSI undergraduates. They are designed to allow students to investigate aspects of anatomical research and its applications.

Overseas Research Electives

Annually, a number of undergraduate RCSI students are funded to take part in two-month research programmes in an Erasmus* country. This offers you the perfect opportunity to enhance your international experience of work and student life in another European country.

**The Erasmus Programme is a European Union (EU) student exchange programme.*





Photo Courtesy of Dr. Ben LaBrot, RCSI Class of 2006, Founder of The Floating Doctors

Clinical Electives

Participation in clinical electives is very beneficial to students entering their final years at RCSI. Through a network of strategic partnerships, including Johns Hopkins Hospital Group, Columbia University Medical Center and the Mayo Clinic, the university offers a significant number of overseas clinical elective opportunities for students.

Electives are an enriching experience for students who work with patients in some of the world's leading hospitals.

Clinical electives are allocated and managed by a dedicated and highly experienced team. They will provide you with advice throughout the process and administrative support during the application time window.

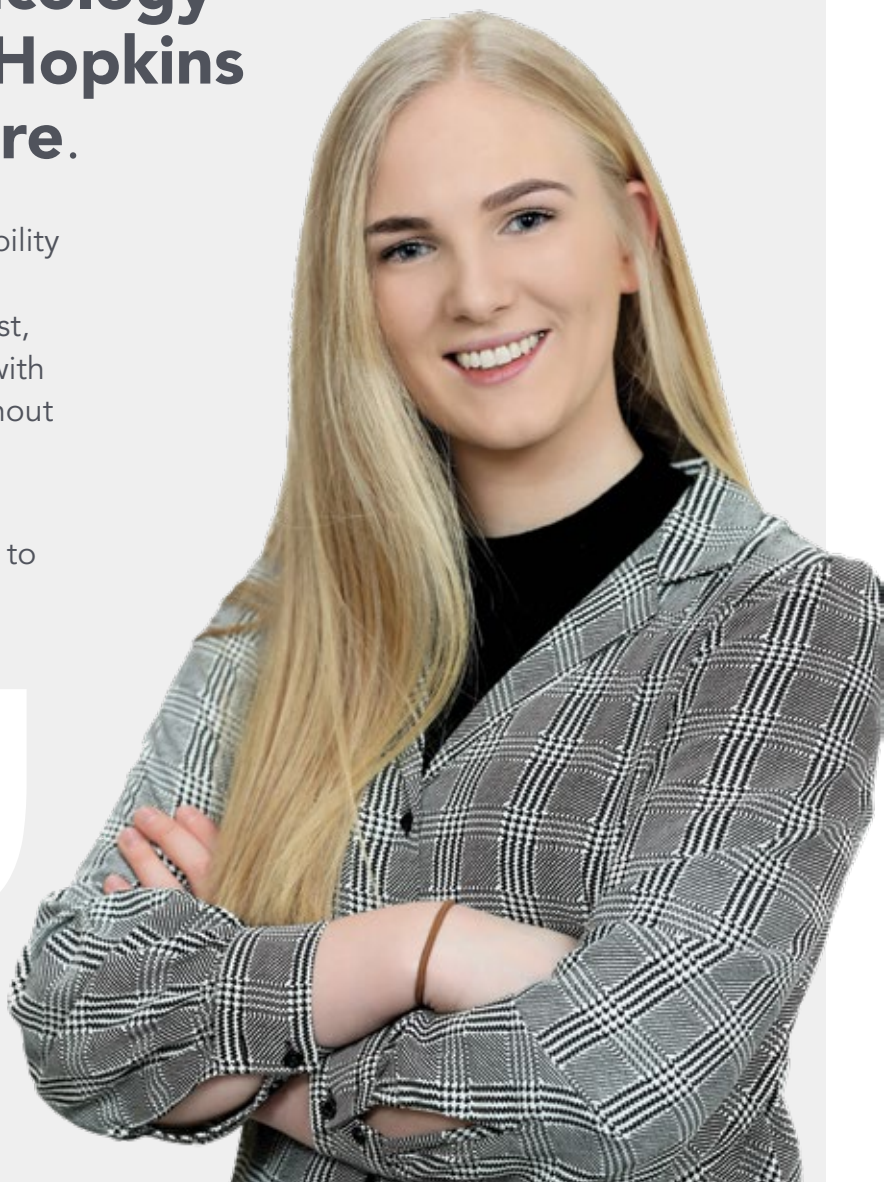
ALICE TALBOT
CLINICAL ELECTIVE, JOHNS HOPKINS BALTIMORE

The RCSI collaborative elective programme is a **unique opportunity** for RCSI students to gain clinical experience in North America and Canada. As part of this initiative, I had the privilege of completing an **oncology clerkship at Johns Hopkins Hospital in Baltimore.**

This elective involved significant responsibility with day-to-day patient care and clinical decision-making. Although daunting at first, the team at Johns Hopkins provided me with continuous support and guidance throughout the placement including daily one-to-one teaching sessions.

This programme is a fantastic opportunity to advance your clinical acumen while also providing an opportunity to travel and make connections for your future career.

The professional and clinical skills embedded in RCSI students have an international translatability that will allow you to excel and enjoy all your international electives.



INTERNATIONAL CITIZENSHIP PROGRAMME

The International Citizenship Programme encourages you to reflect on and develop the skills, values and attitudes you will need to work effectively in a culturally diverse healthcare environment. This structured self-directed programme empowers you to avail of the rich multi-cultural opportunities for self-development through enriching extracurricular activities, interacting with others from diverse backgrounds, and formally reflecting on your personal development through these activities, supported by staff mentors.

If you successfully demonstrate an 'International Outlook' in these areas, the programme leads to an International Citizenship Award.

VOLUNTEERING

The REACH RCSI Programme is a unique community outreach and access programme that promotes recreation, education and community health.

Students are encouraged to participate in various initiatives throughout the year which include a second-level education homework club, science workshops and sports and health programmes. These initiatives enhance the life chances of young students from socially disadvantaged areas who are traditionally underrepresented at university level education.

Approximately 50 RCSI students, from all programmes, volunteer each year.

You can help by leading teams, encouraging the children taking part and running a variety of events and sports activities.



STUDENT WELFARE SERVICES

RCSI is committed to encouraging and assisting students to maintain optimum physical and psychological health as a positive platform for academic and professional achievement. We recognise, however, that at times students can face personal challenges during their training.

Welfare Team

The CoMPPAS Student Welfare team provide confidential one-to-one support and advice for students at RCSI. The service is Social Worker led and aims to empower students to reach their full potential and overcome the challenges they meet in the course of their studies.

When required, interventions are designed to promote and restore student well-being. This service works collaboratively and pro-actively with you to promote positive behaviours and develop personal strategies that empower you to self-manage and sustain your well-being in future professional practice.

There are three full-time staff on the RCSI Student Welfare team and they can facilitate consultations on-campus, in Beaumont hospital or remotely.

You can avail of our services individually or attend workshops and group sessions run throughout the year.

Counselling Services

RCSI offers a professional independent confidential counselling service, available to all RCSI students, which is located off campus. Our counselling service has extensive experience over many years in providing counselling support to RCSI students. On behalf of RCSI, they manage a diverse panel of over 20 professionally registered counsellors with a broad range of expertise located across the city.

The CoMPPAS Student Assistance Programme (CSAP) is a confidential and independent counselling and specialist information service, which can be accessed 24 hours per day, 365 days per year, and can be accessed anywhere in the world. This service provides both phone based support, information and access to up to six face to face counselling sessions.

Primary Care

All undergraduate students of RCSI (including Graduate Entry Medicine students) are entitled to free General Practice consultations at our on-campus medical centre. Our student scheme also helps you source the most appropriate health insurance plan on a reduced annual premium.

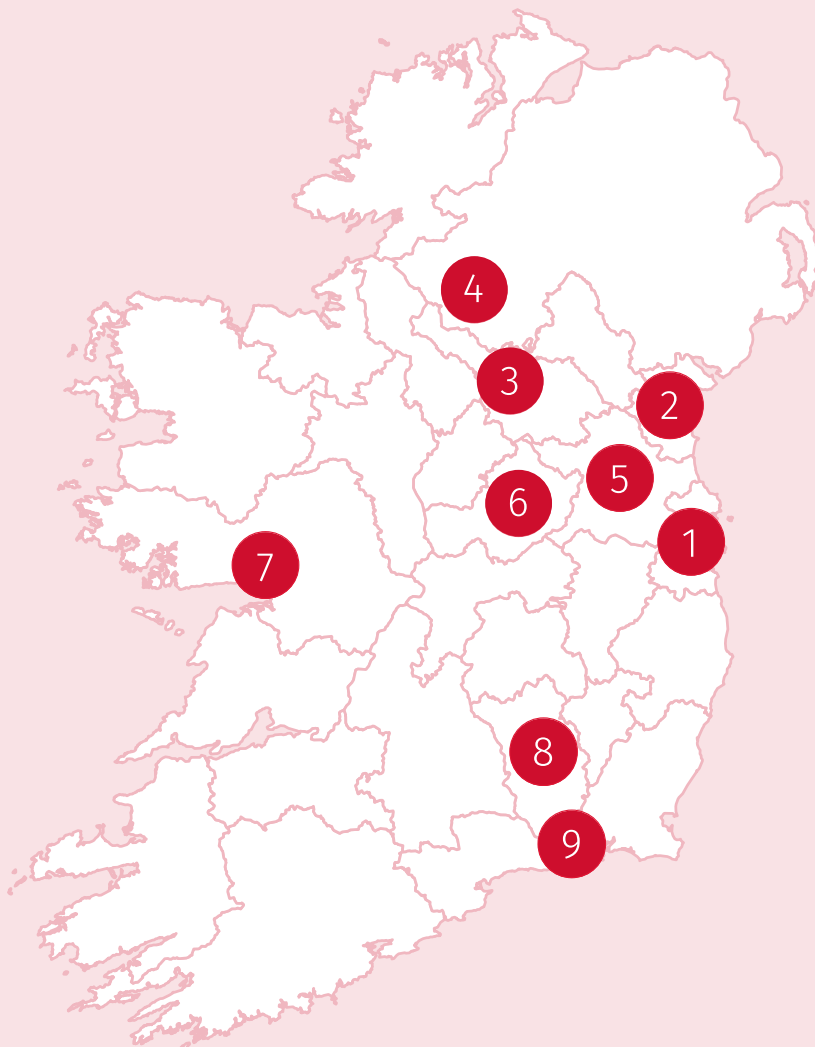
There are also free health supports available to any student that may be affected by Covid-19 throughout your time at RCSI.

Mental Health

As you learn about human systems, it is important you appreciate that you too are a human system and may be vulnerable when one element is underperforming or not working correctly. For this reason, RCSI places a special emphasis on our students' professional obligation to actively manage their personal health during their academic and clinical training.

If any of our students experience mental health challenges, help is available 24/7.

EDUCATION AND CLINICAL NETWORK



WHERE

- | | |
|-----------------|-----------------|
| 1 Co. Dublin | 6 Co. Westmeath |
| 2 Co. Louth | 7 Co. Galway |
| 3 Co. Cavan | 8 Co. Kilkenny |
| 4 Co. Fermanagh | 9 Co. Waterford |
| 5 Co. Meath | |

RCSI HOSPITALS GROUP

As an RCSI student, you will attend a wide variety of public, private and specialist teaching hospitals and clinical sites where you will learn to hone your clinical and professional skills.

This is an overview of the RCSI teaching hospitals and clinical sites:

1 Beaumont Hospital is the largest academic teaching hospital in the RCSI Hospitals Group. Emergency and acute care services are provided across 54 medical specialities and Beaumont Hospital is a designated Cancer Centre and the Regional Treatment Centre for Ear, Nose and Throat (ENT) and Gastroenterology. Beaumont Hospital is also the National Referral Centre for Neurosurgery and Neurology, Renal Transplantation and Cochlear Implantation.

1 Connolly Hospital is a major teaching and health-promoting hospital. Services include a 24-hour Emergency Department, acute medical and surgical services, acute psychiatric services, long-stay residential care, day care, out-patient care plus diagnostic and therapeutic and support services.

1 The Rotunda Hospital was founded in 1745 and is the oldest continuously operating maternity hospital in the world. The hospital delivers approximately 9,000 babies annually and provides pregnancy, neonatal and gynaecological care.

2 Our Lady of Lourdes Hospital provides acute medical and surgical services as well as maternity services to Louth, Meath and the surrounding areas including parts of north county Dublin.

2 Louth County Hospital provides acute and community care services to the population of Louth, Meath and Monaghan.

3 Cavan & Monaghan Hospital provides acute and community care services to the population of both counties and extends to counties Meath, Longford and Leitrim.

AFFILIATED, SPECIALIST AND PRIVATE HOSPITALS AND CLINICAL SITES

① **The National Maternity Hospital** provides obstetrics, gynaecology and neonatal services and delivers more than 9,000 babies each year.

① **The Coombe Women & Infants University Hospital** provides comprehensive care for women and infants at local, regional and national levels and delivers approximately 9,000 babies each year.

① **Children's Health Ireland at Crumlin** is an acute paediatric hospital. Major specialities at the hospital today include neonatal and paediatric surgery, neurology, neurosurgery, nephrology, orthopaedics, ENT and plastic surgery.

① **The Royal Victoria Eye and Ear Hospital** is a public teaching hospital in Dublin. It is the National Referral Centre for both eye, ear, nose and throat disorders and provides specialist care in ophthalmology.

① **Cappagh National Orthopaedic Hospital** is Ireland's major centre for elective orthopaedic surgery and the largest dedicated orthopaedic hospital in the country.

① **The National Rehabilitation Hospital** provides complex specialist rehabilitation services to patients who require specialist medical rehabilitation.

① **St. Colmcille's Hospital Loughlinstown** provides a range of services to a diverse population covering South County Dublin and County Wicklow. Services include an injury unit, medical assessment unit, acute medical in-patient services, day surgery, outpatient care and diagnostic services.





1 **Blackrock Clinic** is the leading and longest-established private hospital and clinic in Ireland. The clinic has consistently built an unparalleled reputation in new High-Tech surgical procedures, medical treatments and ground-breaking diagnostics.

1 **Beacon Hospital** is one of the most advanced private hospitals in Europe, with over 1,300 consultants, nurses and healthcare professionals. It provides 24-hour world-class acute-care services, including orthopaedics, physiotherapy, cardiology, women's health, urology, cardiothoracic surgery, vascular surgery, plastic and reconstructive surgery, ENT, neurology, general surgery, comprehensive cancer care and emergency medicine.

1 **The Bon Secours Private Hospital Dublin** is an independent acute-care hospital in Glasnevin, Dublin, providing medical care to patients from Dublin and across Ireland since 1951.

1 **Hermitage Medical Clinic** is a 112-bed private hospital in Lucan providing medical, surgical and advanced radiotherapy care to patients supported by the very latest medical technology and most advanced diagnostic equipment.

1 **Cluain Mhuire Service** is a community-based adult mental health service covering a population of over 175,000 in the Dublin South East region.

1 **Mental Health Services** are provided through the HSE across all regions.

1 **St. Patrick's Mental Health Services** is Ireland's largest, independent, not-for-profit mental health service. It provides both community and outpatient care through its Dean Clinics and day-patient services through the Wellness and Recovery Centre.

1 **ReproMed** Ireland provides an IVF unit in Dublin as well as fertility clinics in Dublin, Cork, Drogheda, Kilkenny and Limerick.

1 **SIMS** provides some of the most advanced and successful testing technology and IVF treatments to patients.

4 **The South West Acute Hospital**, Enniskillen, delivers a wide range of services including general medicine, surgery, maternity and paediatric medicine and is part of the Western Trust.

5 **Our Lady's Hospital Navan** is part of the Louth/Meath Hospital Group and provides general acute hospital services and orthopaedic services to the region.

6 **Regional Hospital Mullingar** provides a range of acute and specialist services to the population of Westmeath, Longford and the wider community.

7 **Galway Clinic** is a state-of-the-art, 146-bed hospital that provides 24-hour healthcare services. Here, more than 140 highly skilled physicians and surgeons cover a wide variety of specialities.

8 **St Luke's General Hospital Carlow-Kilkenny** is a large hospital providing acute healthcare services.

9 **University Hospital Waterford** provides general medical, surgical and maternity care. It also provides the following speciality services: cardiology, trauma orthopaedics, ophthalmology, neurology, nephrology, rheumatology, urology, vascular surgery, ENT and neonatology, radiology, pathology and microbiology.



Mercer Court
accommodation

LIVING SPACE

When it comes to accommodation, there are options to live both on or off-campus.

Our on-campus accommodation at Mercer Court and New Mill Street is popular with students who are joining university for the first time, particularly students from overseas.

On-campus accommodation provides you with an easier transition into life away from home and ensures you are part of a community of students in the same situation. While taking on the practical responsibilities of living independently, you also have a wonderful opportunity to forge new friendships and networks.

Some of our Graduate Entry students prefer to live off-campus and we have a dedicated Student Services team to ensure you will find suitable accommodation in Dublin.



New Mill Street
accommodation



Scape accommodation



Scape accommodation



Scape accommodation



Scape accommodation



New Mill Street accommodation

04 WHAT YOU WILL BECOME

Choose RCSI for a life that can lead you anywhere

CAREER DEVELOPMENT

At RCSI, we see our role as more than providing you with an education. Joining RCSI is just the start of your career and we offer many career supports during your time with us to help you achieve your ambitions.

Career Support

As a specialised healthcare university, we have a career development team that helps you to identify, map and action your pathway into your future healthcare career.

Our mission is focused on helping you identify your career goals and supporting you while you acquire the skills, knowledge and capabilities needed to achieve them.

We want to empower you to respond, plan and take advantage of the opportunities that are available in the ever-evolving global healthcare sector. To achieve this, we work in partnership with RCSI staff and a wide range of organisations around the world. Seventy percent of our student body comes from abroad. So, when planning

your career overseas we ensure that our faculty and the career support team work together with you to ensure you are as competitive an international candidate as possible.

We work with you to develop a career strategy and advise you, depending on your goals. We offer one-to-one appointments, along with small and large group briefings in addition to workshops tailored to your career aspirations.

Career Discovery

Passport for Success is an RCSI initiative that helps you integrate into life in Dublin and understand what contributes to your academic success.

Every year, we work with you to plan your future career. We provide access to one-to-one sessions as well as careers workshops at important decision-making periods of your education cycle. The programme also advises on personal effectiveness, professionalism and exam revision.



Your journey will follow in the path of former students

MENTOR NETWORK

The RCSI Mentor Network is a unique interactive portal where senior clinical students can connect directly with alumni working in careers that may be of interest to them. This initiative helps you to make informed career decisions as you move from undergraduate education to excellent post-graduate training opportunities in healthcare settings throughout the world.

You can reach out to alumni to get advice and learn how best to succeed in your chosen career path. Our mentors are in North America, Europe, Asia, Africa and beyond.

GLOBAL GRADUATES

Alumni Network

The RCSI Alumni Network comprises leading health practitioners and researchers in over 97 countries. In these countries, our alumni are often directing national health policies, heading surgery at top-tier hospitals, breaking new scientific ground in disease prevention, and bringing healthcare to the regions where it is needed most.

When you graduate, you join this global network of leading healthcare professionals actively working towards better patient outcomes across the world.



Dr. Benjamin LaBrot
Medicine, Class of 2006
Co-Founder,
The Floating Doctors.

The Floating Doctors provide healthcare, education & community development to underserved communities as well as emergency medical care in remote settings.



Dr Houriya Kazim
Medicine, Class of 1988
Breast Surgeon at
Well Woman Clinic, UAE.

Dr Kazim was the first female surgeon in the UAE and founded "Brest Friends", the only breast cancer support group in Dubai.



Dr Alan Moss
Medicine, Class of 1997
Associate Professor of
Medicine at Harvard
Medical School.

Consultant gastroenterologist at Beth Israel Deaconess Medical Center in Boston, and Director of Translational Research.



Ms Fatima Rustom
Pharmacy, Class of 2008
Pharmacy Director at the
Communicable Disease
Center (CDC) in Qatar.

CDC is dedicated to the diagnosis, treatment and prevention of infectious diseases as well as education and research, with a focus on tuberculosis (TB), respiratory diseases and other infectious diseases.



Ms Avril Copeland
Physiotherapy, Class of 2010
CEO and co-founder of
Innerstrength

An eHealth company that develops digital tools which facilitate health professionals and patients to work together for the prevention and treatment of chronic conditions.



Begin your
journey at
RCSI and join
us in **Leading
the World to
Better Health.**

05 OUR PROGRAMMES

NFQ: Level 8

AWARD: MB, BCh, BAO,
 (NUI & RCSI) LRCPI & LRCSI

AWARDING BODY:
 National University of Ireland

During Foundation Year at RCSI, you study the principles of foundation sciences, communication and how to work as part of a team.

You obtain a solid grounding in the biomedical sciences and professionalism plus the necessary IT skills to operate efficiently within the College's virtual learning environment (VLE).

This prepares you for success in both your future medical studies and career.

MEDICINE — UNDERGRADUATE

RCSI is committed to producing clinically skilled doctors with the most relevant and robust experience required to work in today's health systems.

Throughout your time at RCSI, you have the opportunity to develop your clinical, communication and professional skills in a safe, simulated environment in Europe's largest and most modern clinical simulation facility and by training in Ireland's leading hospitals.

We also provide you with many opportunities to build your career outside of the classroom through research and clinical electives as well as sub-internships.

FOUNDATION YEAR

SEMESTER 1

Fundamentals of Medical Physics

Fundamentals of Medicinal & Pharmaceutical Chemistry

Fundamentals of Human Biology

Musculoskeletal Nervous, Skin, Special Senses, Reproduction & Endocrine Systems

Cardiovascular, Gastrointestinal, Immune, Excretory & Respiratory Systems

Professionalism in the Health Sciences

Biomedical Laboratory Sciences

FOUNDATION YEAR

SEMESTER 2

Diseases, Diagnostics and Therapeutics

Medicinal & Pharmaceutical Chemistry II

Musculoskeletal Nervous, Skin, Special Senses, Reproduction & Endocrine Systems

Cardiovascular, Gastrointestinal, Immune, Excretory & Respiratory Systems

Professionalism in the Health Sciences

Biomedical Laboratory Sciences

YEAR 1

SEMESTER 1

In Year 1, you will learn about the normal body structure and function, including anatomy dissection. You are also introduced to professional clinical practice and contact with patients.

Tutorials and practicals serve to reinforce and enhance your understanding of the fundamental concepts covered in lectures and test your basic understanding through applied problems in a practical context.

Fundamentals of Biomedicine and Pharmacology

Introduction to Professional Clinical Practice

Musculoskeletal Biology

Cardio Respiratory Biology

YEAR 1

SEMESTER 2

Gastrointestinal Biology

Nervous System Biology

Renal and Endocrine Biology

Introduction to Professional Clinical Practice



YEAR 2

SEMESTER 1

Year 2 of the medicine programme focuses on the abnormal bodily functions. Semester 1 is primarily based in Beaumont Hospital and involves teaching from a wide variety of specialties, including Clinical Microbiology, Pathology, Immunology, Professionalism, Therapeutics in addition to the medical and surgical sub-specialties. Teaching includes lectures, small-group tutorials, workshops, case-based multi-disciplinary teaching sessions with various hospital specialists, clinical skills, interprofessional education with the School of Pharmacy and online technology-enhanced learning.

The foundations of microbiology, pathology and immunology introduce the essential building blocks so you can manage patients with infection and disease appropriately. After that, students work through the different body systems where the focus is on disease of each system, its diagnosis, management and prevention.

Inter-professional, case-based teaching with the RCSI School of Pharmacy takes place in the cardiovascular module. This involves both undergraduate medical and pharmacy students collaborating in small groups to effectively devise an appropriate management plan for a patient with a complex infection (endocarditis) and learn their distinct collaborative roles in patient management.

Foundations in Microbiology

Foundations in Pathology

Immunology & Skin

Respiratory Disease

YEAR 2

SEMESTER 2

Gastrointestinal Disease

Nervous System Disease

Renal & Endocrine Disease

Cardiovascular Disease



YEAR 3

SEMESTER 1 - 2

In Year 3, half of your time will be spent in a hospital setting attached to clinical teams. You will also be provided with opportunities to complete a selected research project and undertake modules focused on evidence-based health, population-based health, quality improvement, leadership and precision medicine.

- Clinical Medicine & Surgery

- Evidence-Based Health

- Health Psychology

- Musculoskeletal & Ocular Disease

- Public and International Health

- Student Selected Project

- Tomorrow's Health Professionals

YEAR 4

SEMESTER 1 - 2

In years 4 and 5, you are attached on a rotational basis for 7 weeks and participate fully with clinical teams in both urban and rural settings.

You will be fully immersed in the specialties of General Practice (learn alongside a general practitioner in a GP surgery), Paediatrics (you will be placed in one of the Paediatric units throughout the country), Obstetrics and Gynaecology (you will be attached to a Maternity Unit and expected to assist on the labour ward), Psychiatry (you will attend a Psychiatry service under the supervision of a local psychiatric service). In the Medicine and Surgery rotation, you will also have the opportunity to enhance your prescribing skills and undertake placements in Otolaryngology and Ophthalmology.

- Medicine & Surgery (ENT)

- General Practice

- Psychiatry

- Obstetrics and Gynaecology

- Paediatrics and Neonatal Medicine

YEAR 5

SEMESTER 1 - 2

The final year prepares the student towards becoming a working clinician. This year provides you with significant clinical exposure via attachments, electives and the sub-internship, through which you are trained and assessed as you undertake the roles of the near-graduating doctor. This clinical experience runs in parallel with a teaching programme focused on knowledge and skills in these areas. Preparation for practice in medicine and surgery will occur in our major teaching hospitals, including 25% of elective modules in disciplines and on locations of your choosing.

Medicine and Surgery



SALEH ALJUNDI
MEDICINE, SAUDI ARABIA

My experience at RCSI has surpassed all of my expectations. Being one of the world's only specialist health sciences universities with a unique clinical simulation facility, it offers us a **unique healthcare learning environment to learn & practice clinical skills.**

From the moment I arrived at RCSI, I have been offered a huge range of opportunities such as attendance at workshops and conferences and support structures such as the Compass Team and Student Services which have made the whole process of moving to a new environment a lot less overwhelming.

Everyone is busy concentrating on our studies but we also make sure to find time for extra-curricular activities. RCSI has over 70 clubs and societies and I have participated in volleyball, running, the Middle Eastern Society and more thus far. These societies gave me the opportunity to meet students from a wide range of backgrounds, speeding up the process of making friends and settling into life in Dublin.



05 OUR PROGRAMMES

NFQ: Level 8

AWARD: MB, BCh, BAO,
(NUI & RCSI) LRCPI & LRCSI

AWARDING BODY:

National University of Ireland

Year 1 of the programme is delivered through systems-based modules, teaching you about how the body works in the healthy state.

Surgical grand rounds, weekly cases and clinical skills training provide clinical context in the 1st semester. In the second semester, students attend hospital placements on Wednesday afternoons providing an opportunity for application of their clinical skills.

After end-of-year exams, you will also complete a hospital placement for the month of June.

Again in Year 2, the programme is delivered through systems-based modules but during this year you gain an understanding of the basic pathological and microbiological principles underlying human disease, along with detailed teaching on clinical aspects of relevant human conditions within each module.

Each module comprises smallgroup tutorials encompassing weekly cases, clinical skills (including relevant history-taking and examination) and radiology.

GRADUATE ENTRY MEDICINE

RCSI was the first medical school in the Republic of Ireland to introduce a Graduate Entry Medicine (GEM) programme in 2006, enabling students from a range of undergraduate backgrounds to study medicine.

This accelerated programme is designed for students with an undergraduate degree who wish to return to education and pursue a career in medicine.

YEAR 1

SEMESTER 1

Fundamentals of Biomedicine

Musculoskeletal Biology

Blood: Haematology and Immunology

Molecular Medicine

Health, Behaviour and Patient Safety

Gastrointestinal Biology

Clinical Practice and Diagnostic Skills

YEAR 1

SEMESTER 2

Cardiorespiratory System

Renal and Endocrine Biology

Nervous System Biology

Evidence-Based Health/Public Health & Epidemiology

Clinical Practice and Diagnostic Skills

Clinical Attachment

Molecular Medicine

YEAR 2

SEMESTER 1

Cardiology

Respiratory

Gastrointestinal and Hepatology

Clinical competencies

YEAR 2

SEMESTER 2

Simulation scenarios using our state-of-the-art simulators also facilitate clinical teaching.

During Year 2, you complete two one-month clinical attachments that provide you with the opportunity to become an active member of a clinical team within the hospital, and learn about the multiple aspects of patient management within this setting.

Renal, Endocrine, Genitourinary and Breast
 Central Nervous System and Locomotors
 Haematolymphoid and Tropical Medicine
 Clinical competencies

YEAR 3

SEMESTER 1 - 2

Years 3 and 4 of the GEM programme are delivered in RCSI affiliated teaching hospitals located throughout Ireland, providing you with different learning opportunities. You are attached on a rotational basis for 7 weeks and participate fully with the clinical teams in both urban and rural settings.

You will be fully immersed in the specialties of General Practice (learn alongside a general practitioner in a GP surgery), Paediatrics (you will be placed in one of the Paediatric units throughout the country), Obstetrics and Gynaecology (you will be attached to a Maternity Unit and expected to assist on the labour ward), Psychiatry (you will attend a Psychiatry service under the supervision of a local psychiatrics service). In the Medicine and Surgery rotation, you will also have the opportunity to enhance your prescribing skills and undertake placements in Otolaryngology and Ophthalmology.

The final year prepares the student towards becoming a working clinician. This year provides you with significant clinical exposure via attachments, electives and the sub-internship, through which you are trained and assessed as you undertake the roles of the near-graduating doctor. This clinical experience runs in parallel with a teaching programme focused on knowledge and skills in these areas.

Rotations:

Medicine & Surgery (ENT)
 Paediatrics and Neonatal
 General Practice
 Psychiatry
 Obstetrics and Gynaecology

YEAR 4

SEMESTER 1 - 2

Rotations:

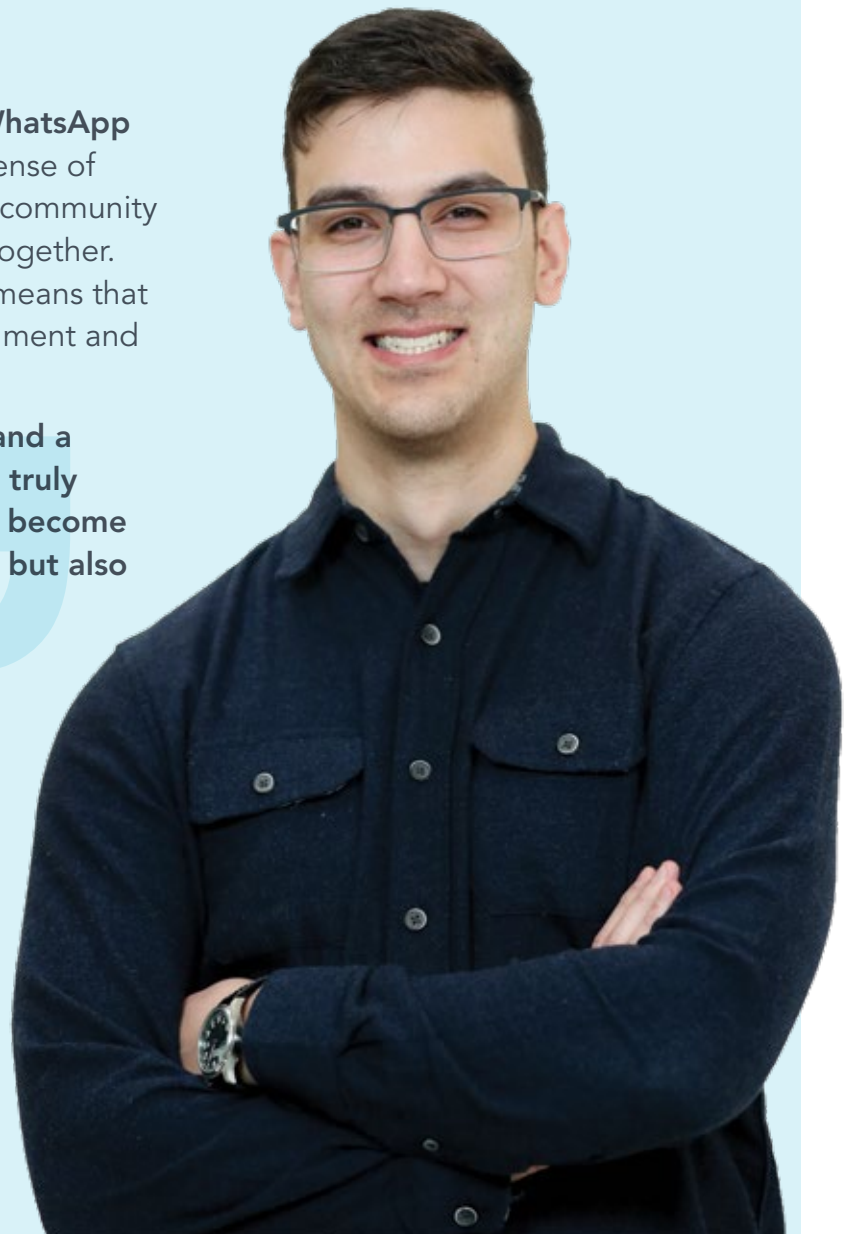
Medicine & Surgery (24 weeks)
 Sub-internship (4 weeks)
 Student Selected Clinical Attachment (4 weeks)

CHRISTOPHER WOODWARD
GEM, USA

As a **GEM** student from the U.S., one of the most endearing aspects of RCSI is the **collaborative atmosphere**.

From day one, support was only ever a WhatsApp message away. I found that rather than a sense of oppressive competition, there is a sense of community as the students are all working to succeed together. The small-group teaching method in GEM means that we are learning in a very supportive environment and get regular feedback.

Coupled with the world-class professors and a vastly diverse student population, RCSI is truly special in that it prepares you not only to become an excellent physician and team member, but also a true global citizen.



05 OUR PROGRAMMES

NFO: Level 9

AWARD: MPharm (NUI, RCSI)

AWARDING BODY:
National University of Ireland

PHARMACY

RCSI's 5-year globally recognised MPharm programme offers you a range of career options in areas such as community and hospital pharmacy, the pharmaceutical industry, medical research and development, regulation and academia.

Clinically focused from the outset, the patient is at the core of everything you learn from first year right through to final year. You will have the opportunity to develop these clinical and professional skills while studying alongside your future colleagues in Medicine and Physiotherapy, ensuring the multidisciplinary nature of patient care is reflected in your education at RCSI.

Year 1 is an introduction to the foundation material that provides you with the fundamental skills and knowledge in basic science and practice.

You will also be introduced to the systems-based modules which are delivered by multidisciplinary teams.

YEAR 1

SEMESTER 1

Pharmacist: Beginning the Professional Journey

Health, Body and Function

Physical and Chemical Properties of Drugs and their Dosage Forms 1

Professional Development 1

YEAR 1

SEMESTER 2

Gastrointestinal Health: Medicines and Patient Care

Cardiovascular Health: Medicines and Patient Care

Physical and Chemical Properties of Drugs and their Dosage Forms 2

Professional Development 1



YEAR 2

SEMESTER 1

Year 2 is wholly integrated around the organ systems model introduced in Year 1.

The actions, interactions and use of medicines and pharmaceutical care are all delivered through this integrated, systems-based approach. There is an emphasis on the pharmacist as a caregiver.

Respiratory Health: Medicines and Patient Care

Musculoskeletal and Haematological Health Medicines and Patient Care

Central Nervous System: Medicines and Patient Care

Professional Development 2

YEAR 2

SEMESTER 2

Immunology: Defence and Management Response

Infection: Optimising Prevention and Treatment Strategies

Sensory and Protective Structures: Health and Potential for External Delivery

Professional Development 2

YEAR 3

SEMESTER 1

Year 3 continues with the systems-based model of teaching. You will extend your knowledge and experience of the actions and interactions of medicines, and pharmaceutical care.

You will participate in a series of Rotational Hospital Pharmacy Placements (RHPP) across a range of hospital sites. As part of RHPPs, you will undertake Mental Health First Aid training, an International evidence-based programme.

You will have the opportunity to participate in elective placements, which take place in Ireland and countries such as China, Japan and the US.

The Liver and Kidney: Health, Function and Medicines Handling

The Endocrine System: Hormones as Signals and Regulators

Men's and Women's Health: Tailored Care

Professional Development 3

YEAR 3

SEMESTER 2

Stages of Life: The Changing Body and Medicines Handling

Cancer: Prevention and Control

The Drug Life Cycle: Discovery and Beyond

Professional Development 3

YEAR 4

SEMESTER 1

The pharmacy practice placement runs throughout the first semester of Year 4, and you are based entirely off campus during this time.

The second semester comprises 12 direct-contact teaching weeks, 1 week of revision and 2 weeks of examinations. You will have an opportunity to select an optional module designed to reflect your special interests in Semester 2.

You also complete a research project as part of the 'Scientific Research Skills' module.

Online module: Organisation and Management Skills

Online module: Professional Skills Development

Online module: Professional Practice

Professional Development 4

YEAR 4

SEMESTER 2

Global and Population Health

Elective Module – Students choose 1 elective from 6 available

Scientific Research Skills

Professional Development 4

YEAR 5

SEMESTER 1

The MPharm year of the programme concentrates on preparing you for practice. The placements in both Years 4 and 5 give you an opportunity to engage with a range of employers across a spectrum of practice settings. You participate in 3 taught modules during the first semester while also completing Professional Development 5.

From January to August, you will be on patient-facing placements.

This is your final opportunity to cement the knowledge, skills and competence you have been acquiring since Year 1.

International graduates of the MPharm programme have a two-year stayback visa option should you wish to practice in Ireland.

Patient Care and Society

Decision-Making in Complex Care

Leadership in Pharmacy: Building the Future

Professional Development 5

YEAR 5

SEMESTER 2

Online module: Supply of Medicines and Organisation and Management Skills

Online module: Leading the Safe and Rational Use of Medicine

Online module: Professional Practice and Public Health

Clinical Research Skills

Professional Development 5

YEAR 5

SEMESTER 3

Professional Registration Examination (PRE)

Placement

Professional Development 5

CHIAMAKA CHIEDOZIE
PHARMACY, NIGERIA

My journey at RCSI has been nothing short of PHENOMENAL. I am passionate about diversity so one of the main attractions of RCSI for me was the diverse international community

From year one on the programme, we were practicing clinical skills and participated in patient consultation labs. **The lectures are well structured and you learn the value of teamwork across all healthcare professions.** I also had the opportunity to take part in research with the Health Research Board through the Research Summer School organised in the college, which was a fantastic learning experience. In third year, you complete a mental health first aid training course which is unique to RCSI's School of Pharmacy.

Besides learning from some of the best in their respective fields, you also get to learn about different cultures from all over the world. I have had the opportunity to be involved in extracurricular activities such as joining different clubs and societies. **I was President of the Caribbean African Society in my second year in college which I really enjoyed!** Overall, my RCSI experience has been amazing and I would not trade it for anything in the world.



05 OUR PROGRAMMES

NFQ: **Level 8**

AWARD: **BSc (Hons) (NUI, RCSI)**

AWARDING BODY:
National University of Ireland

PHYSIOTHERAPY

Our internationally recognised RCSI Physiotherapy programme is designed to provide you with training, education and rehabilitation in a variety of clinical settings. Upon completion of the Physiotherapy programme, you will be a fully qualified Physiotherapist.

Our small class sizes provide you with access to hands-on, one-to-one practical and clinical training with academic staff. You will study alongside your future colleagues in Medicine and Pharmacy, ensuring the multidisciplinary nature of patient care is reflected in your education.

As an RCSI Physiotherapy graduate, you will be career ready and in high demand with a highly portable degree.

Foundation Year provides you with a solid grounding in the biomedical sciences and professionalism plus the necessary IT skills to operate effectively within the University's virtual learning environment (VLE).

The course is delivered as a series of stand-alone 5-credit modules taught in a single semester, and integrated, systems-based modules, delivered across 2 semesters. The Introduction to Physiotherapy Practice module provides you with an appreciation of the array of clinical specialties and settings in which physiotherapists work. It also presents the first opportunity for a clinical visit.

Elective opportunities facilitate your growing awareness of the crucial roles that communication, culture, collaboration, critical thinking, medical ethics, information literacy, project management and self-reflection play in the professional practice of physiotherapy. They also provide students with an opportunity to work collectively with the Medicine and Pharmacy students.

FOUNDATION YEAR

SEMESTER 1

Fundamentals of Medical Physics

Fundamentals of Medicinal and Pharmaceutical Chemistry

Fundamentals of Human Biology

Musculoskeletal System, Nervous System, Skin, Special Senses, Reproduction and Endocrine Systems

Cardiovascular, Respiratory, Immune, Gastrointestinal and Excretory Systems

Professionalism in the Health Sciences

Biomedical Laboratory Sciences

FOUNDATION YEAR

SEMESTER 2

Disease Diagnostics and Therapeutics

Introduction to Physiotherapy Practice

Musculoskeletal System, Nervous System, Skin, Special Senses, Reproduction and Endocrine Systems

Cardiovascular, Respiratory, Immune, Gastrointestinal and Excretory Systems

Professionalism in the Health Sciences

Biomedical Laboratory Sciences

YEAR 1

SEMESTER 1

Year 1 provides you with a sound base of scientific knowledge that underpins the practice of physiotherapy.

You gain an understanding of the structure, function and inter-relationship of systems in the human body by studying Anatomy and Physiology.

Year 1 also focuses on acquisition of the knowledge and basic skills required to assess and treat people with common musculoskeletal conditions.

Anatomy

Neuromusculoskeletal I

Physiology

Methods of Enquiry

Physics

YEAR 1

SEMESTER 2

Neuromusculoskeletal II

Anatomy II

Health, Behaviour and Patient Safety

Professional Development I

Clinical Placement 1

YEAR 2

SEMESTER 1

Year 2 builds on what you have already studied by further consolidating the knowledge and skills of physiotherapy practice.

The focus this year is on the application and analysis of problems and their effects in core clinical areas, e.g. cardiovascular/respiratory, neurology and musculoskeletal.

You gain an understanding of the research process and develop an ability to appraise and evaluate research and scientific literature. Blocks of clinical education alternate with academic modules in a variety of clinical settings. In the clinical environment, you develop an understanding of the context of physiotherapy practice.

Advanced Musculoskeletal I

Neuroscience Psychology

Neuroscience Anatomy

Respiratory/Cardiovascular I

Neurology I

Professional Development II

Clinical Placement 2

YEAR 2

SEMESTER 2

Advanced Musculoskeletal II

Respiratory/Cardiovascular II

Neurology II

Research Methods I

Clinical Placement 3

Clinical Placement 4



FINAL PHYSIOTHERAPY

SEMESTER 1

Physiotherapy Across the Lifespan I

Research Methods II

Clinical Placement 5

Clinical Placement 6

FINAL PHYSIOTHERAPY

SEMESTER 2

Complex Clinical Case Management

Physiotherapy Across the Lifespan II (Care of the Elderly)

Research Methods II

Clinical Placement 7

Year 3 focuses on the integration of the knowledge you've already obtained in the programme and understanding an advanced level of practice. Modules in final physiotherapy cover more specialised areas of practice, e.g. sports physiotherapy, women's health, care of the elderly and paediatrics.

Your ability to evaluate and undertake research is also developed further by completing a research protocol.

In the clinical setting, you encounter a more diverse and complex range of client groups in your final year. Throughout the programme, clinical education is a central element, and you will undertake 1,000+ hours on a full-time block basis. This helps you gain essential clinical experience under the supervision of physiotherapy clinical tutors and senior physiotherapy clinicians.

International graduates of the RCSI Physio programme have a one-year stayback visa option should you wish to practice in Ireland.

CIARA PATTON
PHYSIOTHERAPY, AUSTRALIA

I moved to Ireland from Australia to study Physiotherapy at RCSI. **I chose Dublin as a destination as the people are so FRIENDLY & easy going** and the city has a vibrant culture with plenty to do.

It has been an incredible experience thus far both academically and personally. RCSI has incredible facilities with world-class lecturers teaching us and the small class size means that we get great hands-on teaching.

RCSI also offers a wide variety of extra-curricular activities that have helped me to explore Ireland and build friendships.



06 APPLICATION ESSENTIALS

DATE

Applications open on **1 November** and close on **1 February** for students applying directly to RCSI.

Atlantic Bridge applications open mid-July and close on **15 November**, with late applications accepted until **1 February**.

HOW TO APPLY

All Non-EU applicants, with the exception of those who are residing in the USA or Canada in the year of application, should apply directly to the College following the links in the 'undergraduate section' on the RCSI website [rcsi.com/dublin/undergraduate](https://www.rcsi.com/dublin/undergraduate)

Students who are residing in the USA or Canada should apply using our Admissions partner based in California, the Atlantic Bridge Programme atlanticbridge.com

Students applying directly to RCSI can typically apply from early November until the following February.

Students applying through Atlantic Bridge can typically apply from mid-July to mid-November, with late applications accepted until 1 February.

ENTRY REQUIREMENTS

We accept applications from students who study many different curriculum types including A-levels, International Baccalaureate, Indian CBSE, American and Canadian High School Diploma to name but a few. A full list of the academic programmes that are accepted for admission to RCSI, and the required minimum academic entry requirements, are available on the College website.

Some of the more common programmes that students apply to RCSI with and the minimum entry requirements that are required for admission are shown on the table on page 47.



MEDICINE UNDERGRADUATE

Programme	Undergraduate Medicine MB, BCh, BAO, (NUI & RCSI) LRCPI & LRCSI
Duration	5/6 Year Course The undergraduate medicine programme is 6 years in duration (Foundation Year followed by 5 medical years). Some students are required to complete all 6 years while others are exempted from the Foundation Year based on the qualifications that are presented at the time of admission.
Minimum Academic Entry Requirements <i>A full list of entry requirements for the 5 and 6-year programme is available on the RCSI website.</i>	<p>A-LEVEL</p> <p>FIVE-YEAR ENTRY ROUTE (exempt from Foundation Year) Applicants must present a minimum of three A-Level subjects with minimum grades of ABB or AAC, to include Chemistry, one additional laboratory science subject (Biology or Physics), plus one other from the following; Biology, Physics, Mathematics and Psychology All applicants must also have completed a minimum of six subjects at GCSE level, which must include a minimum Grade C in English and Mathematics.</p> <p>SIX-YEAR ENTRY ROUTE Applicants who have completed three A-Levels but do not meet the above subject or grade requirements may be considered for the six-year entry route. Applicants must attain minimum grades of BBB preferably from the subjects Chemistry, Mathematics, Physics or Biology. A missing Science subject must have been taken at GCSE level with a minimum of Grade B attained.</p> <p>-----</p> <p>INTERNATIONAL BACCALAUREATE (IB) DIPLOMA</p> <p>FIVE-YEAR ENTRY ROUTE (exempt from Foundation Year) Applicants must present a minimum score of 36 IB Diploma points (inclusive of bonus points). The IB Diploma must comprise a minimum of six subjects (three subjects at Higher Level and three subjects at Standard Level), which must include Chemistry at Higher Level (with a minimum score of 5) and another laboratory science subject (Biology or Physics) or Mathematics* at Higher Level. If Mathematics is presented with Chemistry at Higher Level, another laboratory science subject (Biology or Physics) must also be presented at Standard Level.</p> <p>SIX-YEAR ENTRY ROUTE Applicants must present a minimum score of 33 IB Diploma points (inclusive of bonus points). The IB Diploma must comprise a minimum of six subjects (three subjects at Higher Level and three subjects at Standard Level), which must include English, Mathematics* and at least one laboratory science subject (Chemistry, Biology or Physics).</p> <p><i>* Both Mathematics: Analysis and Approaches and Mathematics: Applications and Interpretation are acceptable for application to RCSI</i></p> <p>-----</p> <p>INDIA</p> <p>Applicants must hold a bona-fide certificate of completion issued by the CBSE or CISCE.</p> <p>FIVE-YEAR ENTRY ROUTE (exempt from Foundation Year) Applicants must achieve a minimum average score of 90% or above across five subjects to include Chemistry, Biology and either Physics or Mathematics. Applicants must achieve a minimum score of 75% in each individual subject.</p> <p>SIX-YEAR ENTRY ROUTE Applicants must achieve a minimum average score of 80% or above across five subjects to include Chemistry, Biology and either Physics or Mathematics. Applicants must achieve a minimum score of 75% in each individual subject.</p> <p><i>Please note: At the time of publication, Indian nationals intending to practice in India at any stage in their medical career are required to sit the NEET examination in India and obtain a Certificate of Eligibility from the Medical Council of India, prior to commencing medical studies. This information is accurate at the time of going to print. Please check the most up to date rules and regulations re eligibility to practice in India post-graduation, with the Medical Council of India (www.mciindia.org).</i></p>

[Click here for other Non EU entry requirements for Undergraduate Medicine \(MB BCh BAO\)](#) 

GRADUATE ENTRY MEDICINE

Programme	Graduate Entry Medicine MB, BCh, BAO, (NUI & RCSI) LRCPI & LRCSI
Duration	4 years
Minimum Academic Entry Requirements	<p>Applicants must hold or expect to hold by July prior to entry a competitive GPA* from an accredited undergraduate bachelor degree, plus GAMSAT or MCAT.</p> <p>Competitive undergraduate Degree (usually a science degree) and MCAT or GAMSAT.</p> <p>Non-EU applicants can provide GAMSAT or MCAT examination results. GAMSAT results are valid for two years prior to the start of the programme. MCAT results are valid for three years prior to the start of the programme.</p> <p><i>*GPA's have different scoring systems and can vary from one country to the next. As a consequence, RCSI does not specify a minimum cut off GPA score and all transcripts are individually reviewed to determine if the GPA is competitive for entry.</i></p>

[Click here for Other Non EU entry requirements for Undergraduate Medicine \(MB BCh BAO\)](#) 

PHARMACY

Programme	Pharmacy MPharm (NUI, RCSI)
Duration	Students graduate after 5 years with a Masters in Pharmacy. The option to exit with a BSc after 4 years is also available.
Minimum Academic Entry Requirements	<p>A-LEVEL</p> <p>Applicants must present a minimum of three A-levels with minimum grades of ABB to include Chemistry and one of the following: Mathematics, Biology or Physics. All applicants must also have completed a minimum of six subjects at GCSE level, which must include a minimum Grade C in English and Mathematics.</p> <p>-----</p> <p>INTERNATIONAL BACCALAUREATE (IB) DIPLOMA</p> <p>Applicants must present a minimum score of 35 IB Diploma points (inclusive of bonus points). The Diploma must comprise a minimum of six subjects (three subjects at Higher Level and three subjects at Standard Level), which must include Chemistry at Higher Level (with a minimum score of 5) and another laboratory science subject (Biology or Physics) or Mathematics* at Higher Level. If Mathematics* is presented with Chemistry at Higher Level, another laboratory science subject (Biology or Physics) must also be presented at Standard Level.</p> <p>-----</p> <p>INDIA</p> <p>Applicants must hold a bona-fide certificate of completion issued by the CBSE or CISCE. Applicants must achieve an average of 85% or above in four subjects to include Chemistry, Biology and either Physics or Mathematics. Applicants must achieve a minimum score of 75% in each individual subject.</p>

[Click here for Other Non EU entry requirements for Pharmacy \(MPharm\)](#) 

[Click here for Other Non EU entry requirements for Pharmacy \(MPharm\) - Graduate Route](#) 

PHYSIOTHERAPY

Programme	Physiotherapy Bsc
Duration	4 Year Course The graduate entry physiotherapy programme is 3 years in duration.
Minimum Academic Entry Requirements	<p>A-LEVEL</p> <p>Applicants must present a minimum of three A-levels with minimum grades of BBB to include Mathematics and one of the following laboratory science subjects – Biology, Physics or Chemistry. All applicants must also have completed a minimum of six subjects at GCSE level, which must include a minimum Grade C in English and Mathematics.</p> <p>-----</p> <p>INTERNATIONAL BACCALAUREATE (IB) DIPLOMA</p> <p>Applicants must attain a minimum score of 32 IB Diploma points (inclusive of bonus points). The IB Diploma must comprise a minimum of six subjects (three subjects at Higher Level and three subjects at Standard Level), which must include English, Mathematics* and at least one laboratory science subject (Chemistry, Biology or Physics).</p> <p><i>* Both Mathematics: Analysis and Approaches and Mathematics: Applications and Interpretation are acceptable for application to RCSI</i></p> <p>-----</p> <p>INDIA</p> <p>Applicants must hold a bona-fide certificate of completion issued by the CBSE or CISCE. Applicants must present a minimum average score of 75% in four subjects to include Chemistry, Biology and either Physics or Mathematics. Applicants must achieve a minimum score of 70% in each individual subject.</p>

[Click here for Other Non EU entry requirements for Physiotherapy \(BSc\)](#) 

[Click here for Other Non EU entry requirements for Physiotherapy \(BSc\) – Graduate Route](#) 

FEES

Fees for the academic year 2021/2022

Fees are annual and subject to inflation which normally increases at 2% per annum.

Undergraduate Medicine	€56,000
Graduate Entry Medicine	€57,500
Pharmacy*	€25,000
Physiotherapy*	€25,000

* Scholarships of €7,000 per annum are available to competitive students who are privately funded.

FURTHER INFORMATION


For detailed information on entry requirements per programme, and the admissions procedure, please visit:



rcsi.com/dublin/undergraduate



RCSI
UNIVERSITY
OF MEDICINE
AND HEALTH
SCIENCES

CONNECT WITH US

Chat to our current students today
at [rcsi.com/dublin/chat](https://www.rcsi.com/dublin/chat) 

 [@rcsi_studentlife](https://www.instagram.com/rcsi_studentlife) 

 [@RCSI](https://www.youtube.com/RCSI) 

 [@rcsi123](https://www.facebook.com/rcsi123) 

 [@RCSI_Irl](https://twitter.com/RCSI_Irl) 

E: admissions@rcsi.com 

T: +353 1 402 2228

W: [rcsi.com/dublin](https://www.rcsi.com/dublin) 

