

TAMPERE UNIVERSITY OF APPLIED SCIENCES



Tampere
Finland

KEY FACTS

Subject Area Classical Music

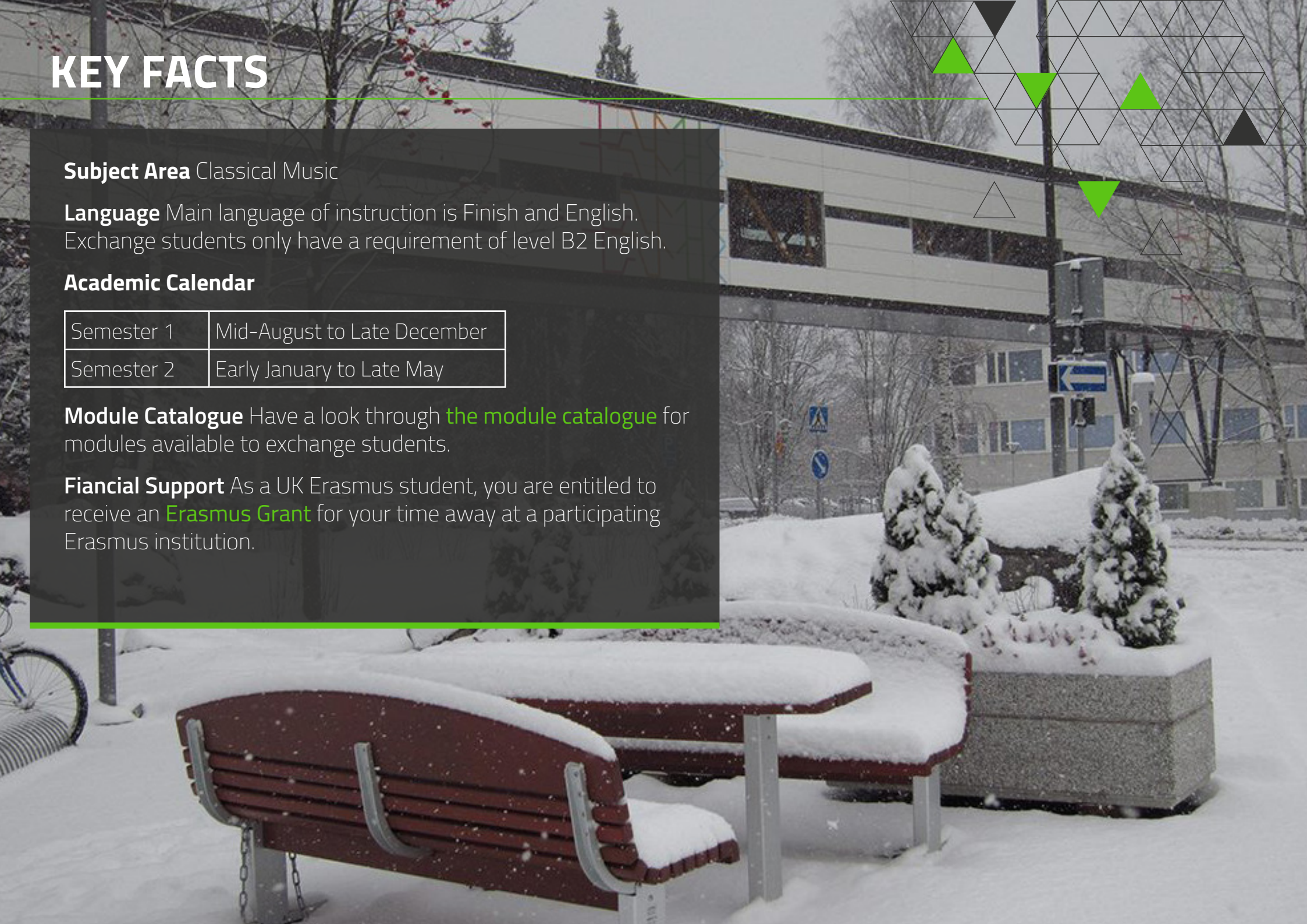
Language Main language of instruction is Finnish and English. Exchange students only have a requirement of level B2 English.

Academic Calendar

Semester 1	Mid-August to Late December
Semester 2	Early January to Late May

Module Catalogue Have a look through [the module catalogue](#) for modules available to exchange students.

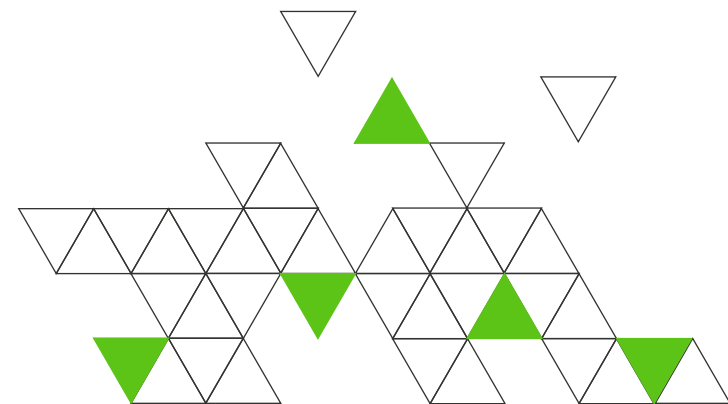
Financial Support As a UK Erasmus student, you are entitled to receive an [Erasmus Grant](#) for your time away at a participating Erasmus institution.





CONTENT

- 4 The City
- 5 The University
- 7 Accomodation & Living
- 8 Contacts
- 9 Student Experiences



TAMPERE, FINLAND

Tampere was founded by Sweden's young monarch, Gustavus III, in 1779. Tampere has a monumental industrial history: the Finlayson cotton mill was the first large-scale industrial enterprise in Finland and it was in fact in fact in Finlayson's factory hall that the first electric light in the Nordic countries was lit.

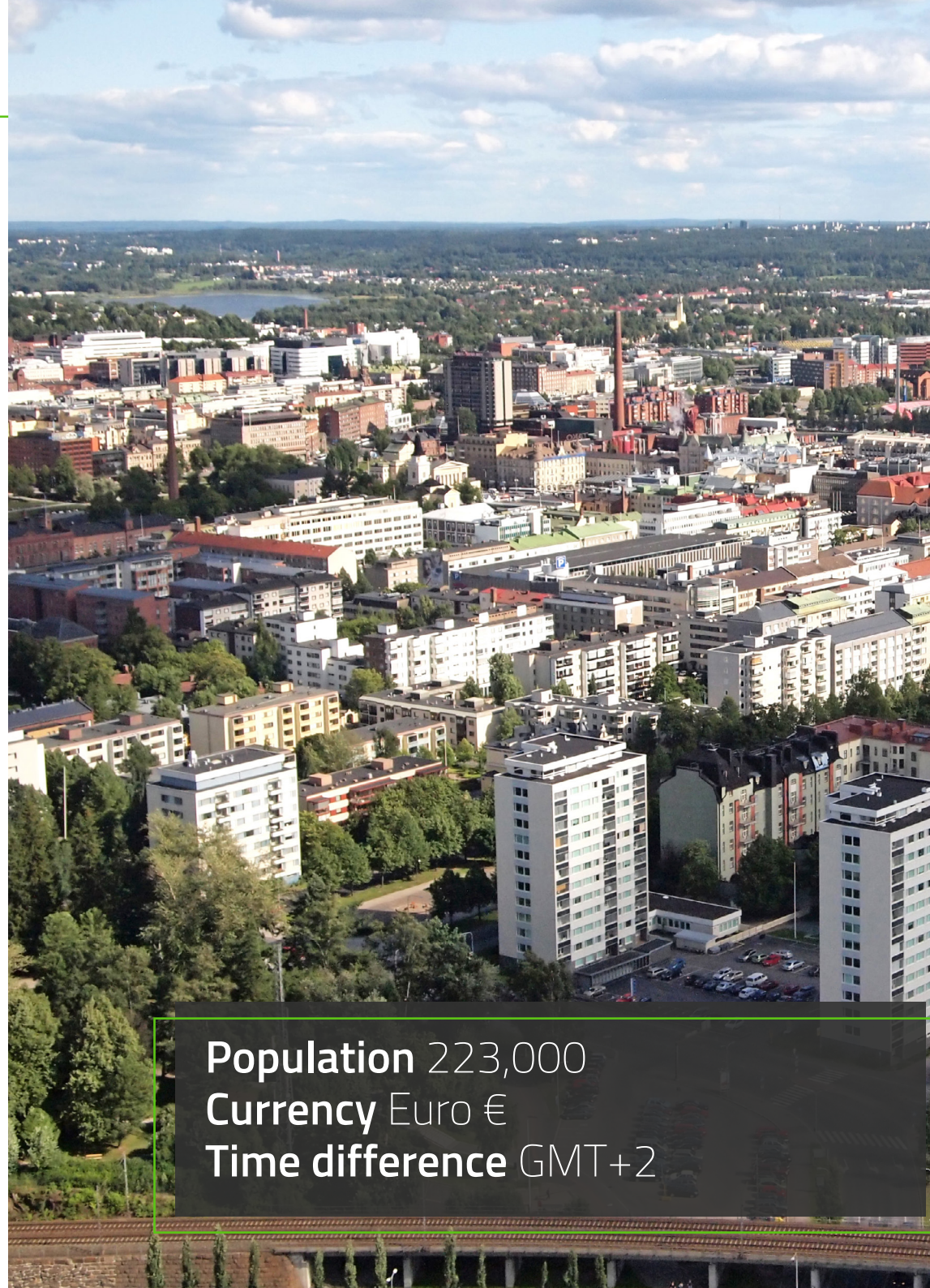
Today Tampere can be described as a centre of leading-edge technology, research, education, culture, sports and business. It is Finland's third largest city as well as the largest inland city in the Nordic countries. Tampere is located on an isthmus between lakes Näsijärvi and Pyhäjärvi, in a beautiful ridge scenery. The Tammerkoski rapids are a nationally recognized landscape and in the city centre you can also enjoy the awarded lighting at Keskustori Central Square. Located 170 km north of the Finnish coastal capital, Helsinki, it is also the largest inland city in the whole Nordic region.

Tampere is home to almost 40 000 higher education students; you will find here a lively, multi-faceted culture, with music, art and museums to suit all tastes. Tampere has a vibrant nightlife and is also a fun city, which is proven by the fact that it's the most attractive city in Finland for students.

In the Tampere Region, the duration of the year's shortest day is approx. 5 h 20 min (22 December) and the longest day of the year (21 June) lasts for about 19 h 30 min. The only things missing in Tampere are the sea and mountains!

MORE INFO

tamk.fi
visittampere.fi
visitfinland.com



Population 223,000
Currency Euro €
Time difference GMT+2



Tampere University of Applied Sciences is one of the largest universities of applied sciences (UAS) in Finland. TAMK is characterized by its diversity and multidisciplinary education. In all our education and development projects, competences in different fields are boldly and creatively combined.

According to the legislation on universities of applied sciences, the main task of a UAS is to provide higher education leading to professional expertise for working life. In addition, a university of applied sciences should support economic and cultural development in its region by conducting applied research and development, and by carrying out and promoting artistic pursuits.

TAMK's educational provision focuses particularly on wellbeing and health, business, and industrial production, with special emphasis on promoting learning and creativity.

Tampere University of Applied Sciences (TAMK) offers a wide repertoire of studies in English: from bachelor's and master's degrees to exchange studies and summer schools.

In international rankings of education systems, the Finnish system is TOP of the class! It was ranked best in the world in 2012 (the Learning Curve, Pearsons).

 tamk.fi

 Guide for International Students

 University Videos

Erasmus code SF TAMPERE06

No of students 10,000

Style of study More oriented towards working life; involves e.g. attending lectures, on-line studying, independent study and various forms of group work. Students also try out your wings in the great world of work, carrying out real tasks for genuine employers.

Grade system

Finnish Grade	Descriptor
5	Excellent
3 - 4	Good
2 - 1	Satisfactory
0	Fail

The marking pass (S) can exceptionally be used if it has been separately stated in the study guide or individual study plan.



Application Times

Please note that you have to apply to the exchange programme in your current year by 20 December. Applications for the host university must be submitted between April and May or September and October (depending on the Trimester), in the year following your initial application.

Going abroad in Trimester 1	Initial Application Form	20 December (current year)
	Host University's Form	April – May (following year)
Going abroad in Trimester 2	Initial Application Form	20 December (current year)
	Host University's Form	September – October (following year)

ACCOMODATION & LIVING



Each student is independently responsible for finding accommodation in Tampere. TAMK provides advice on how to apply for student housing, but we do not have any dormitories nor can we reserve student accommodation for you.

In the autumn, there is usually a shortage of student accommodation. There are thousands of new students looking for student housing at the same time. Apply for a room as soon as you receive a confirmation for your exchange from TAMK to enhance your possibilities of getting a room!

Living Costs

It is very important to know that the cost of living in Finland is higher than in Europe in general. Currently, it is estimated that €700 - €900/month is a realistic figure to cover living expenses.

Accommodation €250 - €450/per month

Food €300/per month

Coffee (regular) €2 - €4

A loaf of bread €1.80

A cinema ticket €12

Single bus ticket €3

Meal in a restaurant €10 - €35

More on Cost of Living in Tampere

 [Numbeo.com](https://www.numbeo.com)

Transport

Public transport in Tampere region is organised jointly between eight municipalities, Tampere, Pirkkala, Nokia, Kangasala, Lempäälä, Ylöjärvi, Vesijärvi and Orivesi. With regional public transport, using the public transport system in Tampere city region is easy and inexpensive. The city of Tampere is serviced by a good transportation network of public buses operated by [Nysse](https://www.nysse.fi).




Students get a 45-55% discount for bus and train travel with the Finnish student card you get by joining the student union.

[OnniBus.com](https://www.onnibus.com) is a low-cost inter-city express bus service and [VR](https://www.vr.fi) operates long distance trains in Finland.

CONTACT FOR INCOMING STUDENTS



If you're interested in the programme or you have any queries, please contact the Edinburgh Napier University's Global Mobility team first:

-  studyabroad@napier.ac.uk
-  0131 455 4574 or 0131 455 3412
-  napier.ac.uk/exchanges

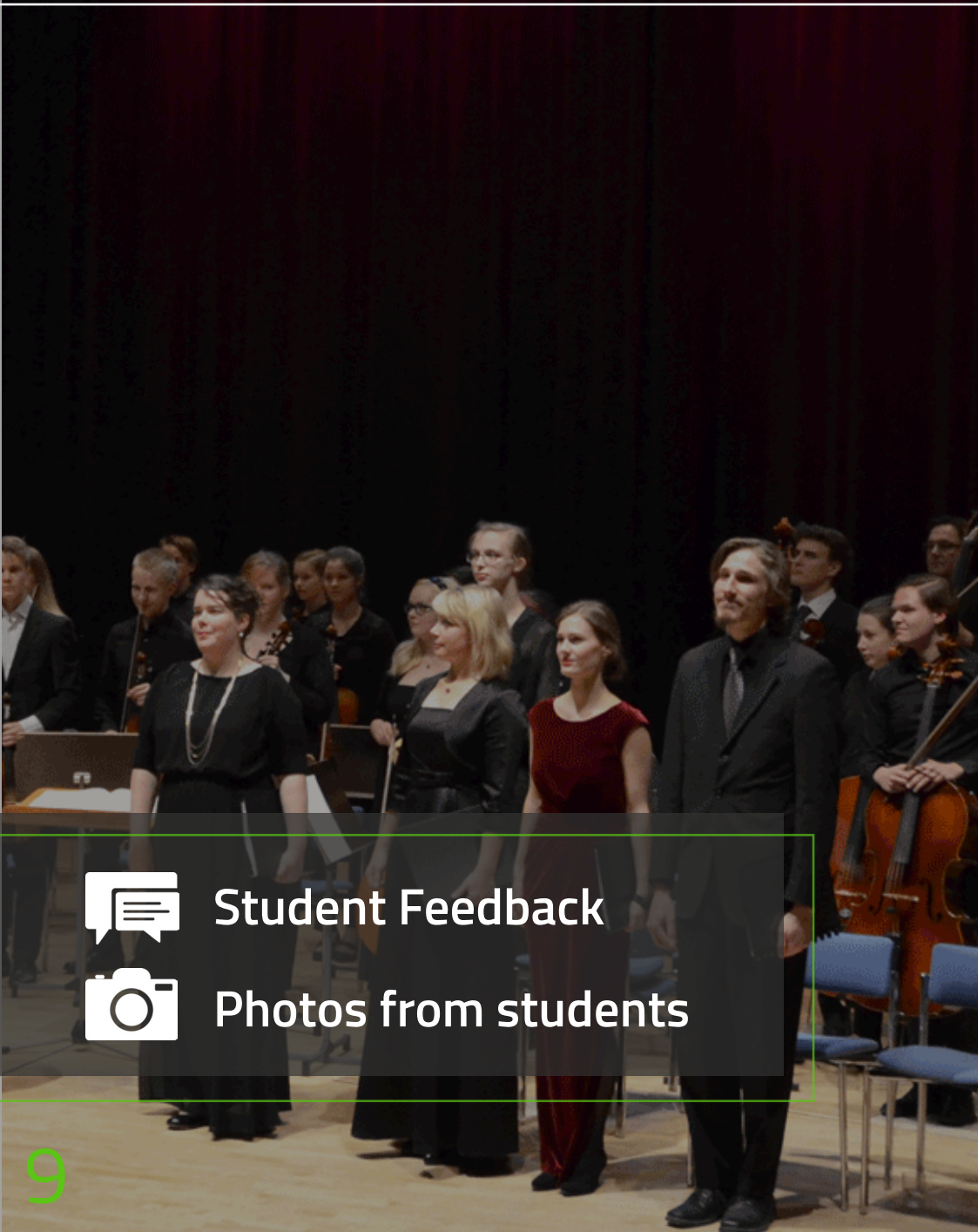
TAMPERE UNIVERSITY OF APPLIED SCIENCES

Ms Marika Kyllönen & Ms Tarja Kononov (International Services)

TAMK Main Campus
Kuntokatu 3
FI-33520 Tampere
Finland

-  incoming.students@tamk.fi
 -  +358 50 307 1409 or +358 40 841 8847
- 

STUDENT EXPERIENCES



“Finland has to be one of the most beautiful countries & I enjoyed the outdoor **healthy** lifestyle”



Student Feedback



Photos from students



All images sourced from the university's official website and social media accounts, except where noted otherwise.

Notice something that we need to fix or update? Please email us studyabroad@napier.ac.uk